

# VENTURE



*Okinawa Awaits...*

**mbc**

INTERNET • CABLE TV

# **FIBER BROADBAND** **INTERNET**

*The **FASTEST** Internet on ALL Bases*

## **GET INTERNET**

AS **EASY** AS **1-2-3**

- 1** Sign Up Online at [MBCOkinawa.net](http://MBCOkinawa.net) or in-person at any on-base office.
- 2** Pick Up equipment in one of our offices or schedule a delivery right to your door.
- 3** Complete a **FREE & EASY** Self-Installation for immediate activation!



IT'S **EASY**  
TO GET MBC  
**CONTACT US ORDER SERVICES**

[mbcokinawa.net](http://mbcokinawa.net)

Paid ad. No federal endorsement of advertiser intended.

# Contents

## THE ROCKER CLUB 6

### FOOD 9

Banyan Tree Pizza  
Oki Dough-Ki Bakery  
Oki Grubs  
Seaside  
Surfside Restaurant  
Chili's

## EDUCATION & EMPLOYMENT 48

Kadena Education & Training Office  
Human Resources

## KADENA FSS DINING 50

## FSS SPOTLIGHT 15

FSS Facilities that Keep You Flourishing



## OKI CULTURAL CORNER 35

Okinawa Awaits...

## LEISURE & RECREATION 18

Kadena ITT  
Okuma Beach  
Kadena Fitness & Sports Complex  
Karing Kennels  
Shogun Auto Care Center  
Banyan Tree Golf Course  
Chibana Golf Course  
Emery Lanes  
Arts & Crafts  
Aquatics  
Kadena Marina  
Outdoor Recreation  
Schilling Community Center  
Kadena Library

## FAMILY 40

Family Child Care  
Teen Center  
Youth Center  
Youth Sports & Fitness  
Military & Family Readiness Center

## #VENTUREINOKI 51



Find and click on Shisa throughout the **online version of Venture magazine** for an interactive experience: [www.kadenafss.com](http://www.kadenafss.com)



SCAN ME

Facility programs, event hours and dates are subject to change.

Venture magazine is designed to inform and entertain the individuals who use Kadena FSS. For article source information, please contact 18 FSS Marketing. The opinions expressed herein are not necessarily those of Kadena Air Base, DoD or the U.S. Air Force.

For information on Venture magazine, call 18 FSS Marketing at 634-5078.

Interested in advertising or commercial sponsorship?

Visit [www.kadenafss.com/sponsorship-advertising](http://www.kadenafss.com/sponsorship-advertising) or email [sponsorship@kadenafss.com](mailto:sponsorship@kadenafss.com).

月刊ベンチャーマガジンへの広告掲載、嘉手納基地福利厚生施設(各種)イベントへのスポンサー支援に関するお問い合わせ先: [sponsorship@kadenafss.com](mailto:sponsorship@kadenafss.com) (日本語可)

[www.kadenafss.com/sponsorship-advertising](http://www.kadenafss.com/sponsorship-advertising)

**KadenaFSS.com**

#KadenaFSS

#VentureinOki

Connect with us @KadenaFSS



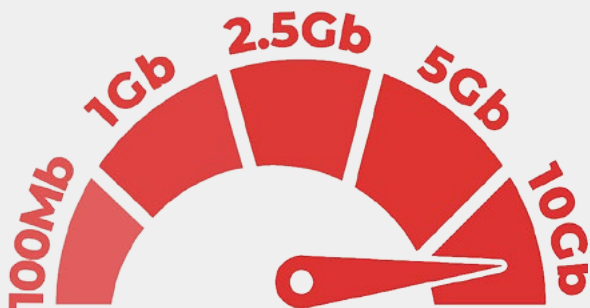
FIBER INTERNET



The Fastest Internet on  
Any Military Installation!

ASK US ABOUT A  
TWO-WEEK FREE TRIAL!

MULTI-GIG



# DORM WI-FI

Plans starting at \$55.95

- FAST & EASY SIGN-UP
- Choose From Several Plans
- Unlimited Data Usage
- True Gigabit Fiber Service From Wired Port
- No Installation Fees
- No Contract Commitments
- No Additional Equipment Needed



ASK US ABOUT OTHER  
OPTIONS IN THE DORMS!



— For More Information, Call Us At —

**03-6868-2300 or +1-415-692-8300**

Paid Ad. No Federal endorsement of advertiser intended.





# EDITOR'S LETTER

SAVANNA DUTCHER  
Acting Marketing Director  
18th Force Support Squadron

## Hello, 2026!

I may be a new face on this page, but I've spent the past three years working behind the scenes—crafting campaigns, leading our incredible account executive team and drinking entirely too much coffee in the name of marketing excellence. I'm thrilled to step into this role as we welcome a new year and share a look at some of the most anticipated events happening around Kadena Air Base. From thrilling competitions to unforgettable experiences, there's something for everyone.

January is already shaping up to be a crowd-pleaser. If your New Year's resolution involves saving money (or simply treating yourself), the Risner Pro Shop has you covered with its New Year's sales. Great deals await—because nothing says "new year, new me" like discounted gear.

We're also celebrating the rising stars of our community with the Youth of the Year awards. These young leaders are inspiring, motivated and probably more organized than most of us were at their age.

If you're craving an escape, Okuma's Winter in the Sun is practically calling your name. Enjoy seasonal discounts and remember that vacation can happen year-round when you live on an island.

Prefer something a little more majestic? Whale-watching season is back at Kadena Marina, offering front-row seats to nature's most impressive splash zone. Bring a camera—or at least a good story to tell afterward.

For our music and entertainment lovers, the stage is set.

X-Factor Unit vs. Unit Karaoke Competition invites you to belt out your favorite tunes. Whether you're a natural performer or a "sing-only-in-the-car" type, there's fun to be had.

Golfers, don't think we forgot you. Both Chibana and Banyan Tree golf courses are teeing up not one but two tournaments each, with sign-ups already open for February. Consider it the perfect excuse to dust off your clubs—and maybe practice that swing you swore you'd improve last year.

And that's just the start. This issue is packed with events, opportunities and experiences to help you make the most of the months ahead. So grab a cup of coffee, get comfortable and dive in. We're excited to share this year with you.

Best,

## COMMAND

### 18TH FORCE SUPPORT SQUADRON

DIRECTOR | Mr. Blaine Miller  
DEPUTY DIRECTOR | Mr. Michael Wadkins

### 718TH FORCE SUPPORT SQUADRON

COMMANDER | Maj Dalin Chhen  
DEPUTY DIRECTOR | Mr. Jonathan Boyd



## MARKETING

Acting Marketing Director | Savanna Dutcher  
Video Producer | Att Eachus  
Photographer | Marina Chayka  
Art Director | Yuka Taira  
Commercial Sponsorship  
Tomoko Toma | Koji Kamekawa  
Supervisory Marketing Specialist | Lacey Hebert  
Account Executives  
Hyeyoung Walker | Lydia Rothstein | Rebecca Olson  
Marianne Dawson  
Marketing Coordinator | Ela Toombs  
Visual Information Specialist | Diana López Hansen  
Graphics  
Yoshihiro Higa | Yuka Kinjo | Yasuhiro Nerome  
Social Media Manager | Genesis Llanos  
Web Specialist | Emily Summers  
Marketing Intern | Prudence Allen

# THE ROCKER CLUB



## X-Factor: Unit vs. Unit Karaoke Contest

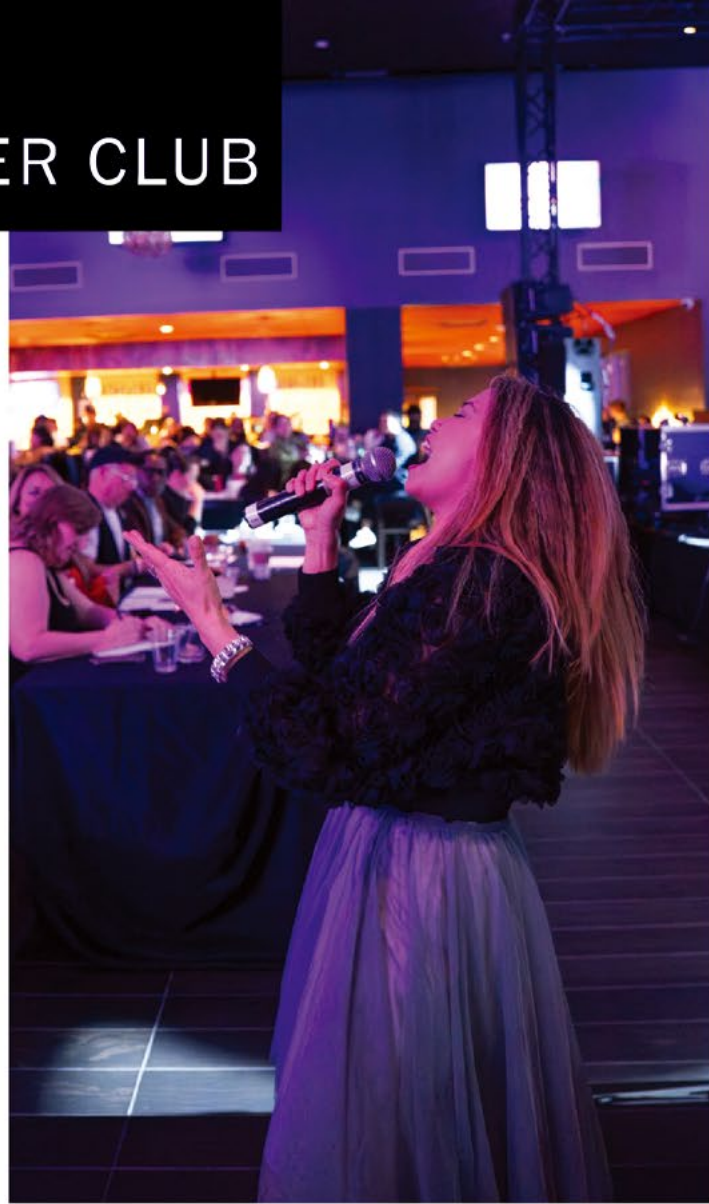
Competition begins Thursday, January 15 | 7 p.m.  
Think your unit has what it takes to hit every note and own the stage? Step up to the mic for the X-Factor: Unit vs. Unit Karaoke Contest at the Rocker Lounge! Sign-ups begin December 1 through January 15 - so start warming up those voices to show us what you've got!

The contest kicks off Thursday, January 15, and continues every Thursday until the Grand Finale on Saturday, March 14, when the top performers will battle it out for the ultimate bragging rights and big prizes. Come out and cheer on your favorite singers as units go head-to-head in an 8-week competition packed with powerhouse vocals, crowd favorites and unforgettable performances.

### Prizes:

First Place | \$750 cash and \$500 toward a unit party  
Second Place | \$500 cash and \$300 toward a unit party  
Third Place | \$300 cash and \$150 toward a unit party

Whether you're on stage or in the crowd, don't miss this exciting showcase of Kadena's singing talent — where only one unit will claim the X-Factor title!





## Superbowl Party

Monday, February 9

Get ready for a full day of football, food and fun at our game-day celebration. Doors open at 7 a.m., with breakfast served from 7 to 9 a.m. Food and refreshments will be available throughout the event, and VIP seating is offered for those who want an upgraded experience.

Guests can take part in the Guess the Score game and the Touchdown Celebration Dance Contest for a chance to win incredible prizes. Prizes are available only to club members in good standing.

Families are welcome, and a dedicated kids zone will keep younger guests entertained while you enjoy the action. Open to all ranks and services.

Round up your friends, cheer on your team and enjoy a great day of football.

## THE ROCKER CLUB

966-7372 | 036-868-2207

Bldg 622  therockerkadena

This month **JAN** at The Rocker Club

**Members Only Two-for-One Special Price**

Tuesdays | 4 - 9 p.m.  
 Chicken Cordon Blue  
 Creamy Tomato Spinach Pasta with garlic bread  
 Beef cutlets with wine gravy sauce  
 Mahi Mahi with lemon garlic butter sauce  
 Each entrée comes with a choice of house salad or cup of soup, two sides and fresh bread unless otherwise noted.  
*Dine-in only. Not available for to-go or pickup.*

**Wednesdays Kids Night Special**

Wednesdays | 4 - 9 p.m.  
 Children ages 10 and under eat free off the kids menu with a purchase of an adult entrée. Dine-in only.

**Drive-By Dinners**

Thursdays | 4:30 - 6:30 p.m.  
 \$12 | Per person (\$2 Member discount)  
 Jan. 8 - Huli Huli Chicken with steamed rice  
 Jan. 15 - Chimichanga with refried beans and Mexican rice  
 Jan. 22 - Bibimbap  
 Jan. 29 - Kalua Pork with steamed rice, macaroni salad and grilled pineapple

Just pull up to the curb at The Rocker Club entrance on Hanabi's side and a staff member will be waiting to assist you. *\*Limited quantities, so come early!*

**Mongolian BBQ Night**

Thursdays | 4 - 9 p.m.  
 Kazoku Place  
 Build your own stir fry meal with our fresh and delicious ingredients.



**THE DAILY GRIND**

**National Hot Chocolate Day**  
 Saturday, January 31  
 Club members receive an extra stamp on their coffee stamp card with a Daily Grind Hot Chocolate purchase.

**HANABI'S PROGRAMS**

Open to all ranks and services | Ages 18 and over

**Salsa Night**

Mondays | 7 - 10 p.m.



**Smartphone Trivia**

Tuesdays | 7 - 9 p.m.  
 \$5 | Reward members  
 \$10 | Nonmembers  
 Teams of 2 (Minimum of 8 participants)

**Country Line Dance**

Wednesdays | 7 - 10 p.m.

**Karaoke**

Thursdays | 7 - 10 p.m.

**Live DJ**

Friday and Saturday | 9 p.m. - 2 a.m.

**ROCKER LOUNGE PROGRAMS**

**Weekly Friday Social Hour**

Fridays | 5 - 7 p.m.  
 Open to all ranks and services | Ages 18 and over  
 Free | Reward Members  
 \$20 | Nonmembers

**Live at the Lounge**

Fridays | 7 - 11 p.m.  
 Feel the rhythm. Embrace the vibes! Live music, good company, and unforgettable nights at the Lounge!

**BINGO**



**\$20K Holiday Bingo**

Monday, January 19  
 Doors open at 2 p.m. | Game starts at 5 p.m.  
 All book games payout \$1,199. Last game is guaranteed \$3,000 payout.

**\$400 Night Bingo**

Sundays, Mondays and Tuesdays | 7 p.m.

**\$500 Night Bingo**

Thursdays | 7 p.m.  
 All book games have a payout of \$500!

**\$750 Night Bingo**


Saturdays | 5 p.m.  
 All book games have a payout of \$750!

**Bingo Appreciation**

Sunday, January 30 | 7 p.m.

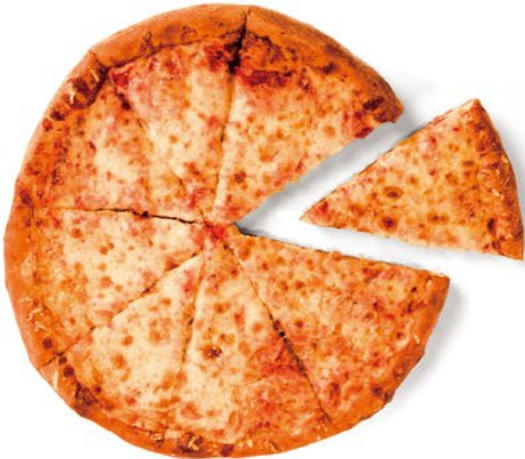
**The Rocker Club**

966-7372 | 036-868-2207

Bldg 622  therockerkadena

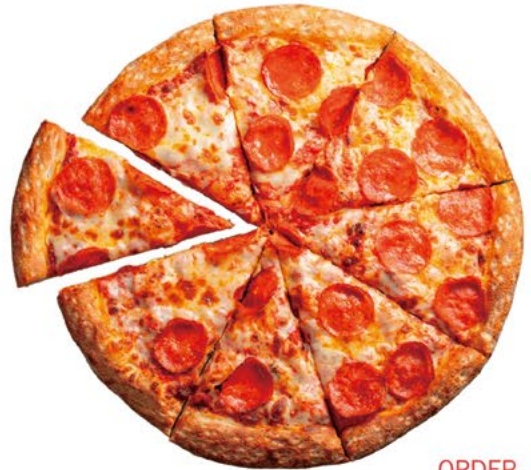
# FOOD

## DOUBLE TROUBLE PIZZA SPECIAL



**ORDER TWO LARGE  
ONE-TOPPING  
PIZZAS FOR \$25**

Add additional  
toppings for \$1.50  
each.



**TUESDAYS  
ONLY!**



Pick-up DSN: 966-7426 | Cell: 036-868-2212  
Delivery DSN: 966-7375 | Cell: 036-868-2274

ORDER  
ONLINE



# ORDERING IN?

## Kazoku Place has you covered

Order online using the Oki Grubs  
app then pick up your order at The Rocker Club!

**OKI  
GRUBS**

[www.kadenafss.com/oki-grubs-app](http://www.kadenafss.com/oki-grubs-app)



# Seaside

## RESTAURANT

AT KADENA MARINA



Great food, great staff and a great view!  
 Located at the Kadena Marina, Seaside serves a delicious and affordable surf & turf style menu right on the waters of the East China Sea.



Visit Seaside at Kadena Marina for more information.



Seaside Restaurant  
 966-7401 | 036-868-2213  
 Bldg 3629A

Live! Maine Lobster

*Best Date Night Restaurant*

**SAM'S BY-THE-SEA**  
 Fresh Island Seafood & Charbroiled Steaks

**Surfer's Choice**  
 Mahi Mahi, Swordfish, Red Snapper

**King Crab Legs & Sirloin Steak**

Okinawa City Awase 098-937-3421  
 ■ 11:30~14:00 L.O.13:30 · Open everyday · \$¥OK  
 ■ 17:00~23:00 L.O.22:00 [sams-okinawa](http://sams-okinawa.com)

Call for Reservations 098-932-1819

PAID AD. No federal endorsement of advertiser intended.

Google Maps for more info

**Get COUPON**

**YouTube**  
**@KadenaFSSTV**

For You

Don't miss a beat—subscribe to **KadenaFSS TV** on YouTube and catch all the action, from base events, Kadena Eats to Okinawa Cultural Corner and more!

# ROMANTIC DINNER

Saturday, February 14 | 5:30 - 8:30 p.m.  
Okuma Beach

Experience an enchanted evening at Okuma Beach and enjoy a four-course meal beautifully prepared by our talented chefs.

Choose a main dish from four decadent options:

- Rib Eye Steak
- Chicken Breast Parmigiana
- Pasta Primavera
- Garlic Shrimp & Lemon Garlic Poached Salmon

All options come with:

- Soup and salad
- Roasted garlic potatoes
- Selected vegetables
- Dawn's Decadent Dessert
- A glass of champagne

Reservations are required for this romantic Valentine's dinner.

Please call 080-6489-8619 by 4 p.m. on February 1.  
(Mon - Fri | 9 a.m. - noon and 1 - 4 p.m.)

# BBQ CHICKEN SALAD

Grilled chicken with bacon, shredded cheese, house-made pico, corn salsa, cilantro, tortilla strips, BBQ and a lime wedge on mixed greens. Served with house-made ranch.



Call to place your order  
DSN 966-7360 or  
036-868-2209 | Bldg 337



Delivery • 11 a.m. - 10 p.m.  
Kadenafss.com/delivery  
DSN 966-7366 or 036-868-2210

Marg OF THE MONTH  
• ALL DAY •  
EVERY DAY

# \$6

## THE Resolution BREAKER MARG

New year, same delicious decisions. Break your resolutions the right way with Cuervo traditional, pineapple juice, mango sweetness and a sparkling Sprite finish.

CUERVO® TRADICIONAL BLANCO  
PINEAPPLE JUICE  
FRESH SOUR  
MONIN® MANGO  
SPRITE®



\$6 MONTHLY MARG  
ALL DAY EVERY DAY



Chili's Grill & Bar  
DSN 966-7359 or  
010-1512-672-7359 | Bldg 105

Drink Responsibly.  
Drive Responsibly.

# Happy New Year, Happy Food, Happy Rycom



Yakiniku Nabeshima



POKE BOO

NEW OPEN



Unagi UMARU



Shabu-shabu Miyama



CHEESE GOOD FACTORY



Rose Garden Café

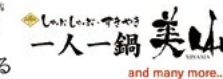
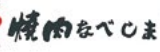
AEON MALL Okinawa Rycom is one of the largest shopping malls on Okinawa. We have one major grocery and lifestyle store and more than 220 specialty stores plus a cinema and food court restaurants.

**AEON MALL**  
AEON MALL Okinawa Rycom

AEON MALL Specialty Stores 10:00~22:00 | Food Court 10:00~22:00 | Restaurant Area 11:00~23:00 | Grocery (AEON STYLE) 8:00~23:00

Featured Stores

Paid Ad.  
No Federal endorsement of advertiser intended.



\*All prices include tax.

60+ stores offer military discounts. Check our stores out now.  
\*Subject to change without notice. \*Cannot be combined with any other promotion offer.



Your Smile, Our Pleasure.

## RYCOM DENTAL CLINIC

- Cleaning, Exam
- Cavity treatment
- Cosmetic dentistry
- Invisalign® and more

 English-Speaking Service Available

Phone: 080-4149-0711

dentalrycom@gmail.com

Mon, Tue, Fri & Sat • 10 a.m. - 1:30 p.m.

3:30 - 7:30 p.m.

Wed, Thu & Sun • Closed

WEBSITE:



MAP:



Inside AEON MALL  
Okinawa Rycom, 2nd Floor



TRICARE is a registered trademark of the Department of Defense, Defense Health Agency. All rights reserved.

Paid Ad. No federal endorsement of advertiser intended.





# FSS FACILITIES THAT KEEP YOU *FLOURISHING*

Article by Savanna Dutcher

**T**he start of a new year often inspires reflection and optimism for what lies ahead. As we look forward to new opportunities, it's natural to look back on the past year with a mix of pride and regret — missed chances, lessons learned and goals yet to be met.

Don't be too hard on yourself, my friend. We've all been there. Every year is filled with both wins and losses.

Regardless of what 2025 brought your way, we want to help you thrive in the year ahead. Here are a few ways our FSS facilities can bring you joy and ignite your passion for life. Come flourish with us in 2026.



## Fitness Centers

FSS offers the best ways to move your body and reach your fitness goals. Risner and Habu fitness centers provide all the equipment you need to weight train, boost your cardio or join a group class or two.

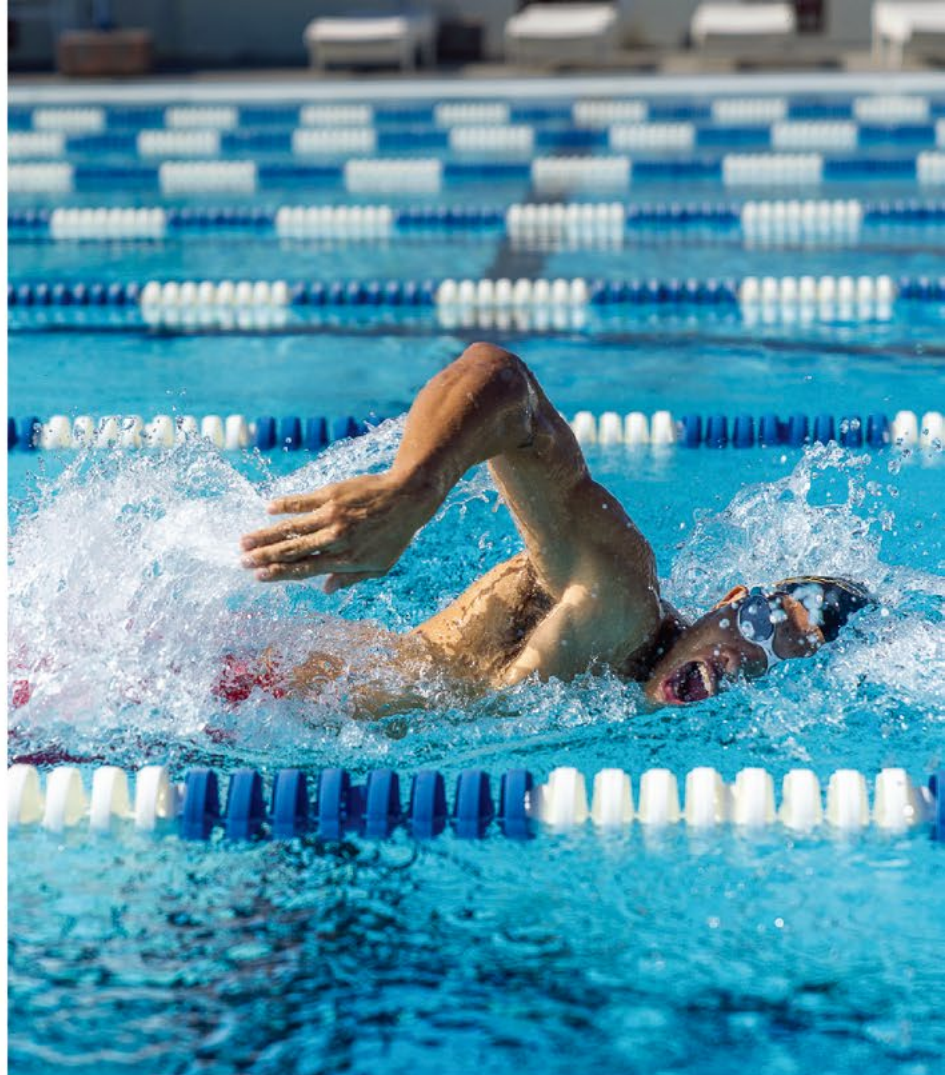
For a well-rounded routine, try adding lap swimming to your schedule — Fairchild Pool offers lap swim year-round.

When your muscles need relief — or you just want some extra relaxation — book a massage at Risner. The team of skilled professionals is ready to help ease your stress and restore balance.

## Dancing

Dance your way into the new year with exciting opportunities at the Schilling Community Center. Ballroom and salsa dance lessons are available to help you sharpen your skills for your next event or night out.

Show off your salsa moves at Hanabi's inside The Rocker Club every Monday night, or try a more down-home style with country line dancing every Wednesday evening. Nothing says flourishing quite like the smile on your face as you move to the rhythm and beat.



## Get Outside

Outdoor Recreation offers endless opportunities to explore the island, but hiking takes the spotlight in January. Join the hiking club to connect with nature, meet new friends and get your body moving.

Experience the ultimate connection with nature on a whale-watching tour with Kadena Marina — a day out at sea is sure to spark joy and wonder.

Looking for a peaceful escape? Spend a night camping under the stars at Okuma Beach. It's a great way to stay active while enjoying a much-needed mental reset.

Though there are countless ways to flourish with FSS, we hope you know you have a friend in us. FSS wants to see you happy, healthy and flourishing as we enter 2026. Your success is our reward.

# LEISURE & RECREATION



## ITT

966-7333 | 036-868-2226 | Bldg 455  
Inside Schilling Community Center  
Email: [ITT@KadenaFSS.com](mailto:ITT@KadenaFSS.com)  
  @KadenaITT

## MORE DAYTRIPS!

### Strawberry Picking

Sunday, January 11 | 9 a.m. - 4 p.m.  
\$49 | Ages 13 and over    \$35 | Ages 6 - 12  
\$26 | Ages 3 - 5         \$6 | Ages 2 and under



### Food and Flower Festival

Sunday, January 25 | 9 a.m. - 4 p.m.  
\$18 | Ages 13 and over    \$15 | Ages 6 - 12  
\$6 | Ages 5 and under

### Nago Cherry Blossom Festival

Saturday, January 31 | 9 a.m. - 4 p.m.  
Sunday, February 1 | 9 a.m. - 4 p.m.  
\$27 | Ages 13 and over    \$23 | Ages 6 - 12  
\$6 | Ages 5 and under



## Overnights

### YYY

March 27 - 29

### Tokyo

March 30 - April 3

### Taipei

March 31 - April 4



## OKUMA BEACH

Okuma Beach | 631-1991  
Lodging Reservations | 098-962-1991  
Surfside Grill & Bar | 098-962-1805  
Okuma Outdoor Recreation | 631-1815  
Massage Reservations | 090-6856-8276

## CAMPING WITH PETS

January 2 - 4  
\$5 | Per camp spot

Breathe in the crisp ocean air, listen to the soothing sound of the waves and gaze up at the sparkling night sky. Gather around the campfire, share stories and toast s'mores for an unforgettable winter escape by the sea. *Restrictions may apply. \*\*Pets must be properly immunized, and proof of vaccination records are required.*






## CAMP UNDER THE STARS

Now - March 26  
\$1 | Per night  
Breathe in the crisp ocean air, listen to the soothing sound of the waves, and gaze up the sparkling night sky. Gather around the campfire, share stories and toast s'mores for an unforgettable winter escape by the sea.

## MANAGER'S MASSAGE DEAL

Now - March 26  
Book any massage and receive \$10 off your stay!  
Choose from our relaxing options, including Hawaiian massage, facial and more.  
Appointments available daily from 10 a.m. to 6 p.m.  
Call 098-962-1990 or 090-6856-8276 (8 a.m. - 5 p.m.)  
*\*Some restrictions apply.*  
*\*24-hour advance reservation required.*



 <https://kadenafss.com/okumabeach>  
 [facebook.com/theokumabeach](https://facebook.com/theokumabeach)  
 [@okumabeach](https://instagram.com/okumabeach)

Get ready for

# Whale Watching Season

with Kadena ITT!

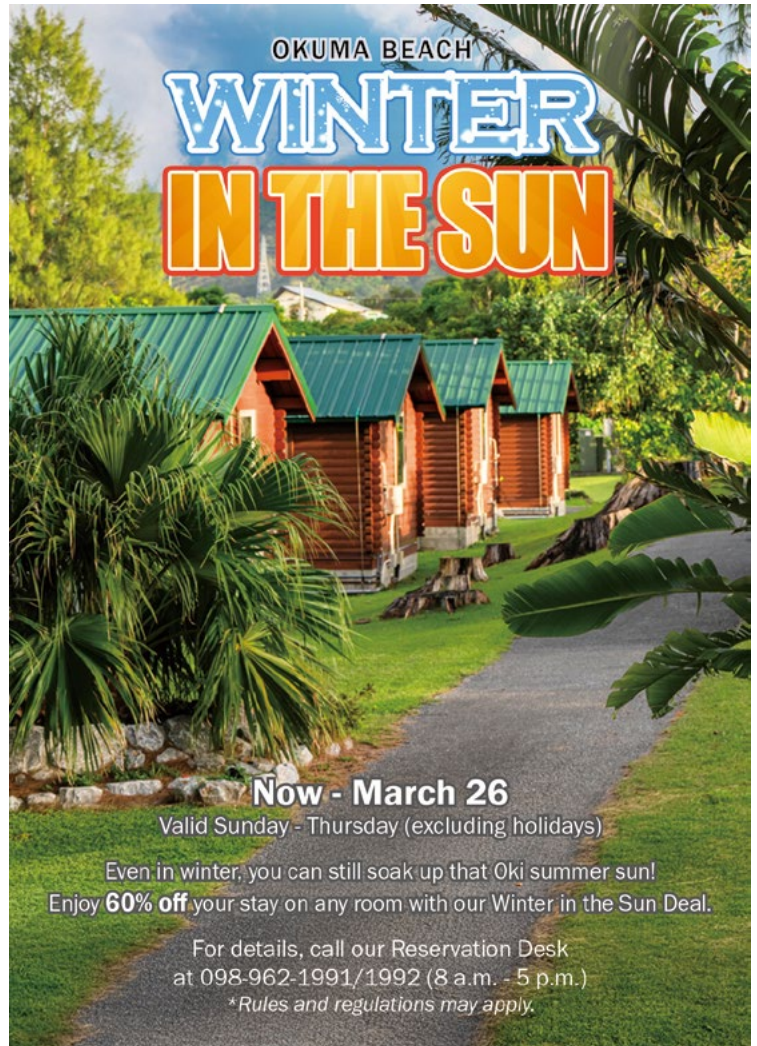
January kicks off the start of Whale Watching Season in Okinawa and Kadena ITT has a tour almost every Saturday and Sunday until the end of the season in March. Stop by our office today to sign up!

Saturday, January 17 | First Tour  
8 a.m. - 1:30 p.m.  
\$50 | Ages 13 and over  
\$35 | Ages 4 - 12



OKUMA BEACH

# WINTER IN THE SUN



**Now - March 26**

Valid Sunday - Thursday (excluding holidays)

Even in winter, you can still soak up that Okj summer sun!  
Enjoy **60% off** your stay on any room with our Winter in the Sun Deal.

For details, call our Reservation Desk  
at 098-962-1991/1992 (8 a.m. - 5 p.m.)

*\*Rules and regulations may apply.*

# LIVE!

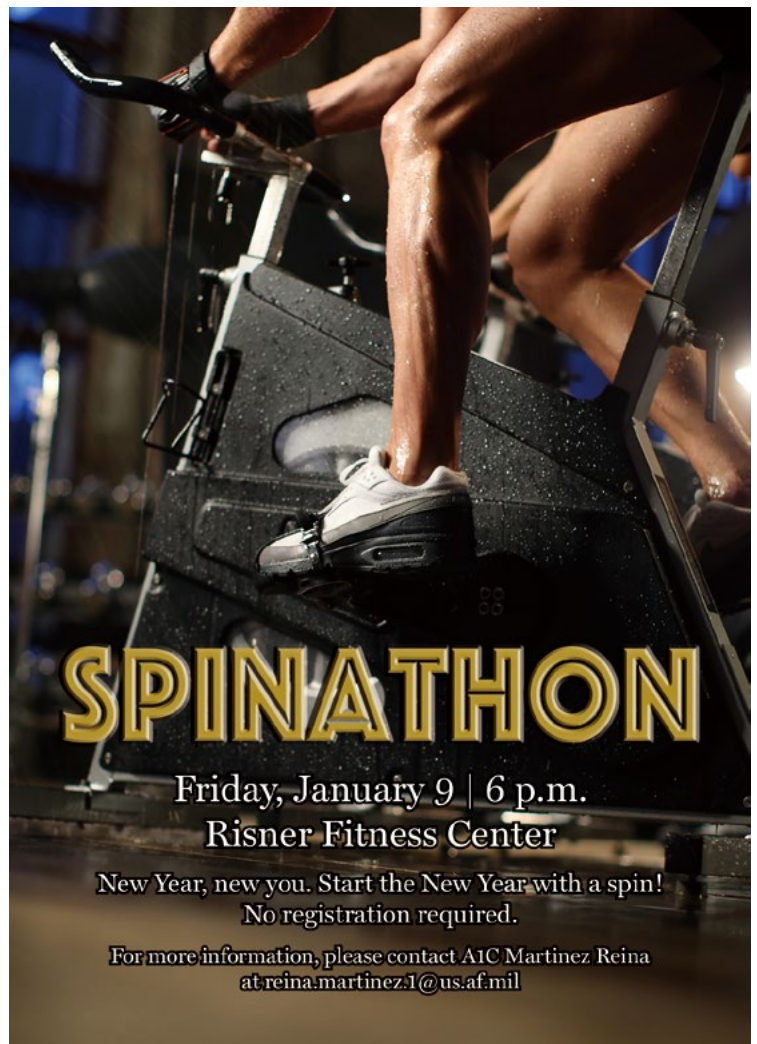


## 89.1 FM

Catch us live every week to find out what's happening with Kadena FSS in Okinawa, Japan!

FSS Hour | Wednesdays | 9 - 10 a.m.  
Monthly Feature | 1st Monday | 9 - 10 a.m.  
FSS Eats! | 2nd Monday | 8 - 9 a.m.  
FSS Spotlight | 2nd and 4th Friday | 3 - 3:30 p.m.

Tune in to AFN on the go with the **AFN Go** app!



# SPINATHON

Friday, January 9 | 6 p.m.  
Risner Fitness Center

New Year, new you. Start the New Year with a spin!  
No registration required.

For more information, please contact AIC Martinez Reina  
at [reina.martinez.1@us.af.mil](mailto:reina.martinez.1@us.af.mil)



## KADENA FITNESS & SPORTS COMPLEX

Habu Fitness Center | Bldg 449  
634-3866 | Open 24/7  
Manned hours | 5 a.m. - 2 p.m.

Risner Fitness Center | Bldg 109  
634-5128 | Open 24/7  
Manned hours | 5 a.m. - 10 p.m.



RisN'Shine  
Mon - Fri | 7 a.m. - 8 p.m.  
Sat and Sun | 7 a.m. - 3 p.m.

Massage Therapy  
Daily | 7:30 a.m. - 7:30 p.m.

Sports Pro Shop  
Bldg 109 | 966-7431 | 036-868-2230  
Mon - Fri | 8 a.m. - 7 p.m.  
Sat and Sun | 7 a.m. - 3 p.m.

### PRO SHOP

#### New Year's Sale

Monday, January 5  
Get 10% off all products! Spend \$100 or more to receive a free Kadena keychain, plus enjoy an extra 10% off sale items.

#### Personal Trainers

Our trainers are certified in NASM, ISSA and ACE! They offer support in weight loss, resistance training, cardiovascular conditioning, nutrition guidance and muscular development. For more information, please contact the Risner Fitness Center front desk.

\$50 per session | Individual training  
\$35 per session | Small group training (2-10)



### Risn' Shine Milky Strawberry Dream

Strawberries  
Vanilla ice cream mix  
Condensed milk  
Whipped cream with strawberry sauce

# Support your dog when they need it most!



Whether it's an upset stomach, low appetite, stress from travel or change, Under the Weather offers vet-formulated solutions to help your dog bounce back fast.

## Bland Diet Meal Packs

- Gentle on sensitive stomachs
- Ready in minutes, just add water
- Long shelf life, perfect to keep on hand

## High Calorie Powder

- Supports healthy weight gain
- Easy to mix with food or water
- Packed with essential vitamins and nutrients

## Anti-Diarrhea Liquid

- Fast, gentle relief for digestive upset
- Helps firm stools and soothe discomfort

## Now available at Karing Kennels.

Ask our team which option is right for your dog.



## KARING KENNELS

Adoption Facility | 966-7338  
036-868-2234 | Bldg 54300  
karingadoptionfacility@kadenafss.com

Boarding Facility | 966-7339  
036-868-2235 | Bldg 4065  
karingkennels@kadenafss.com



## SHOGUN AUTO CARE CENTER

Bldg 1436

Repair Center

966-7356 | 036-868-2232

Mon - Fri, 8 a.m. - 5 p.m.



U-Wrench-It & Parts Store

966-7355 | 036 - 868 - 2221

Mon - Fri, 8 a.m. - 6 p.m.

Sat, 8 a.m. - 6 p.m. | Sun, 10 a.m. - 6 p.m.

Holidays, 8 a.m. - 5 p.m.

### Resale Store Supplies

Visit our resale store for a wide selection of car-related items. If you need repair parts for your vehicle, we can assist you in finding the right components. Be sure to bring your vehicle title, as we require it to verify information and ensure you get the correct parts.

### Shuttle Service

If your vehicle needs repairs and you don't have transportation to get back to work or home, our shuttle service is here to help. We offer rides anywhere on Kadena on a first-come, first-served basis.

### Tire Maintenance

Proper tire care is essential for safe driving. A flat tire can disrupt your day and leave you stranded. Regularly inspect your tires to ensure they're in good condition before heading out on your next trip.

### Portable Jump Starters

Portable jump starters have become a popular tool for drivers. These compact devices not only jump-start your vehicle but also charge USB-powered devices like smartphones. Prices vary, but investing in one can provide peace of mind on the road.





## BANYAN TREE GOLF COURSE

966-7321 | Bldg 12

### Totals - Stableford

4-Person Blind Draw

Saturday, February 7 | Shotgun start 7:30 a.m.

Registration deadline | Monday, February 2

\$50 per person, plus green and cart fees

### Swing & Swirl

Couples

Saturday, February 14 | Shotgun start Noon

Registration deadline | Monday, February 9

\$140 per couple

## CHIBANA GOLF COURSE

966-7327 | Bldg 55061

### Day & Night Golf

3-Person Scramble

Saturday, February 21 | 4 p.m.

Check-in | 3:30 p.m.

\$150 per team



### Mini Swing & Swirl

Couples

Saturday, February 28 | Shotgun start 8 a.m.

Registration deadline | Wednesday, February 25

\$80 per couple

An 18-hole event, with lunch served after the first round.





## EMERY LANES

966-7303 | Bldg 113

### Leagues Begin!

FSS 9-Pin

Tuesday, January 13 | 5:30 p.m.

### 9-Pin

Thursday, January 15 | 7 p.m.

### Challenge Trio League

Monday, January 19 | 7 p.m.

### Youth League and Camp

Saturday, January 24 | 10 a.m.

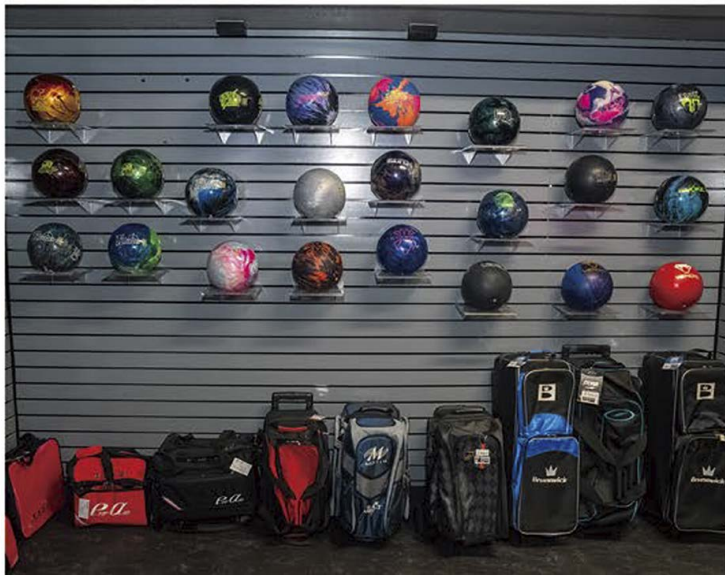
A fun and active way to learn the game, build confidence and make friends. Coaching supports all skill levels in a relaxed, encouraging setting.

### Hours of Operation

Thursday, January 1 | Open Noon - 2 p.m.

Monday, January 19 | Open Noon - 2 p.m.





## OUTPOST BAR & GRILL



### Try our FrostBite!!

Our signature ice cream — blends Okinawa's famed Blue Seal Ice Cream with your choice of mix-ins for a thick, spoon-bending treat. Inspired by the classic Blizzard but crafted with island-born flavors, FrostBite brings a cool twist to every order.

#### Try some of these mix-ins today:

- Skittles
- Reese's
- M&M'S
- Snickers
- Heath
- Oreo
- Hot Fudge
- Caramel
- Strawberry
- Peanut Butter
- Pineapple
- Butterfinger





## KADENA ARTS & CRAFTS

Wood Shop | 036 - 868-2216 | Bldg 455  
Left side entrance next to the garage door  
Mon - Sat | 9 a.m. - 5 p.m.  
Sun, Holidays | Closed



## WOOD SHOP

### *Where Creativity Meets Craftsmanship*

Whether you're a beginner or a seasoned woodworker, our fully equipped Woodshop has everything you need to bring your ideas to life. From power tools and saws to expert guidance, we offer a safe, supportive space for all skill levels.

### What We Offer:

- Custom coin holders
- Paddles
- Command boards
- Conference tables
- Torii gates
- 3D wood cutouts
- Custom woodworking projects



The Wood shop is still operating in the original Arts and Crafts building. Please enter through the side door on the parking lot side—not the main front entrance.

### Holiday Closures

We will be closed on the following dates:  
January 1 | New Year's Day  
January 19 | Martin Luther King Jr. Day



## KADENA AQUATICS

634-7665

Fairchild Pool | Bldg 1988

  @KadenaAquatics

## POOL HOURS

### Fairchild Pool

Monday - Friday

5 a.m. - 10 p.m. (lap swim only)

Saturday, Sunday and Holidays

8 a.m. - 1 p.m. (limited lap swim)

### Holiday Closures

Dec. 31 and January 1 | New Years Eve and New Years Day

### Hagerstrom Pool

Closed for the season.

### Swim Lessons Return in January!

For easy sign-ups, set up an online WebTrac account at ODR now!



# Whale Watching Season Starts January 17!

Saturday - Sunday | 8 - 11 a.m. and 1 - 4 p.m.

\$60, ages 13 and over | \$30, ages 4 - 12

*All trips are weather permitting.*



**KADENA MARINA**

Dive Shop | 036-868-2228

Bldg 3500

 @KadenaFSSMarina



# Sapporo Ski Trip



February 4 - 8

## OUTDOOR RECREATION

966-7343 | 036-868-2229 | Bldg 614

We offer rental equipment from bounce houses to bicycles and camping gear too!

We can also host your next Archery Tag Party!

  @KadenaOutdoorRecreation

### Cycling & Hiking Mt. Katsuu & Furushi (Intermediate)

Saturday, January 10 | 9 a.m. - 3 p.m.

\$30 per person, ages 16 and over

### HIKING CLUB

**Indy Jones** (Beginner)

Friday, January 9 | 9 a.m. - 2 p.m.

**Mt. Ishikawa** (Intermediate)

Friday, January 23 | 9 a.m. - 2 p.m.

Ages 6 and over

\$40 for both hikes, \$25 for one



### Bar Hopping & Food Crawl at Sakae Machi!

Friday, January 30 | 5 - 11 p.m.

\$100 per person, ages 21 and over



### Hiking Mt. Nago

Saturday, January 31 | 9 a.m. - 2 p.m.

### Bouldering Club

Every Thursday | 5 - 6 p.m.

Ages 17 and under | \$15 per lesson



### Archery

Intro to Archery: Saturday, January 31 | 3 - 4 p.m.

Open Shoot: Saturdays, January 4 - 20 | 4 - 6 p.m.



OUTDOOR RECREATION

# Mt. Fuji

## Explore 7 Views in Spring

April 3 - 6

Please contact Kadena ODR for pricing.



# DECKS & DICE

Saturday, January 10  
5 p.m. - Midnight

Doors open at 5 p.m.  
Schilling Ballroom

# 2026 FAMILY BINGO!

Wednesday, January 21 | 5 - 7 p.m.

Schilling Ballroom  
Theme: Sing-Along Bingo  
Games begin at 6 p.m.

Registration opens via WebTrac on January 1 at 10 a.m. Pre-registered individuals may purchase additional cards on the day of the event.

\$10 per player | Expert level (eligible for adult prize)  
\$5 per player | Beginner level (eligible for child prize)

# Happy New Year 2026

**INDIVIDUAL RESERVATIONS**  
For details and reservations, call Kadena ITT at 966-7333.

Visit us on the web at [www.ie-resort.com/english/](http://www.ie-resort.com/english/)  
Phone: 0980-49-5011 Fax: 0980-49-5130

**YKY CLUB IE RESORT**

Paid ad. No federal endorsement of advertiser intended.



## SCHILLING COMMUNITY CENTER

634-1387 | Bldg 455

  @KadenaCommunityCenter



### Night Ops

Saturday, January 24 | 5 p.m. - Midnight

Schilling Ballroom

Consoles will be provided on-site, but attendees may bring their own if they prefer.

### Ballroom and Salsa Dance Lessons

Thursdays | 5:45 - 6:45 p.m.

\$60 for four lessons

Step into the rhythm with our new Ballroom and Salsa Dance Lessons! Whether you're a beginner or looking to brush up on your skills, this is your chance to learn.

### Driver's Education

\$300 class fee

For first-time adult drivers, teens and active duty members. Includes classroom learning and six hours of behind-the-wheel training with experienced instructors. Day and evening classes available.

### Guitar Lessons

Monday - Friday | 30 minute sessions

\$70 per month (includes four sessions)

Contact Schilling for scheduling.

### Japanese Conversation Classes

Mondays | 5 - 6:30 p.m. OR

Wednesdays | 5 - 6:30 p.m.

\$40 registration fee | Includes four classes

### Japanese Flower Arrangement

Saturdays | 11 a.m. - noon

\$50 registration fee | Includes three classes

### Kimono Tapestry Workshop

Saturday, January 31 | 10 - 11:30 a.m.

\$55 registration fee | One class

### STEM Science

Thursdays | 4 - 5 p.m.

\$40 per month

Registration required

1st and 3rd Thursday | Ages 6 - 9

2nd and 4th Thursday | Ages 10 - 12

### Kumon (Math / Japanese)

Tuesdays and Fridays | 3 - 6 p.m.

1st and 3rd Thursdays | 3 - 6 p.m.

30-minute sessions

\$75 per month | One subject

\$150 per month | Both subjects

Math | Ages 5 - 18

Japanese | Ages 5 and over

Registration required

### Cyber Café

Check out our new seating areas with charging ports.

Free use of CAC-enabled computers.

Nominal fee for faxing and printing

### Room Reservations

Ballroom Rental

Capacity | 120 people

\$35 | 1 hour \$65 | 2 hours

\$80 | 3 hours \$30+ | Each additional hour

### Shi-Shi Room Rental

Capacity | 36 people

\$20 | 1 hour \$25 | 2 hours

\$35 | 3 hours \$15+ | Each additional hour

Whether you need a space for a meeting or are planning a rockin' party, we have a room for you.

*Fees apply for non-mission essential reservations. All reservations are on a first-come, first-served basis. Visit the front desk to start planning today.*




## KADENA LIBRARY

Bldg 451 | 634-1502


**Discover a vast collection of books and movies for checkout at Kadena Base Library. Entertainment and knowledge all in one place**

Mon - Tue | 10 a.m. - 6 p.m.  
Wed | 10 a.m. - 8 p.m.  
Thu - Sat | 10 a.m. - 6 p.m.  
Sunday and Holidays | Closed

Visit  Kadena Library for more information on our Library Programs.



# Okinawa Awaits...



There's nothing more frustrating than hearing about an event after it has passed. It's especially frustrating if your partner comes home and tells you that you have orders and you're PCS-ing sometime this year. No matter how long you have left on this island--don't let another year of Okinawan experiences pass you by. We have compiled a list of the cultural happenings, seasonal highlights and photo-worthy activities for you to enjoy. Mark your calendars and make this year count!

*Article by: Marina Chayka & Diana Lopez Hansen  
Photography by: Marina Chayka & Att Eachus  
Layout by: Diana Lopez Hansen*

## WHALE WATCHING

*Jan. - Mar.*

Whale-watching season in Okinawa runs from January to March, when humpback whales migrate south to the warm waters around the Kerama Islands to breed and raise their calves. During this period, the whales are often seen breaching, tail-slapping, and traveling in family groups close to shore. Calm winter seas and high sighting rates make Okinawa one of Japan's most reliable and memorable places to observe humpback whales in the wild.

**PRO TIP:** Catch breathtaking whale sightings right from the cliffs of Cape Zanpa.



## NAGO CHERRY BLOSSOM FESTIVAL | *Jan. 31 - Feb. 1*

Cherry blossom season in Okinawa begins earlier than anywhere else in Japan, typically from mid-January to early February, when the island's distinctive kanhi-zakura bloom in deep pink. The hilltop paths of Nago Central Park become one of the most iconic viewing spots, with hundreds of cherry trees lining the walk up to Nago Castle ruins. The city fills with food vendors, performances and illuminated night sakura.

**PRO TIP:** Don't miss the magical sight of lanterns illuminating the stairway during the festival.



## AZALEA FESTIVAL

*Early/mid Mar.*

Okinawa's Azalea Festival, held each spring at Higashi Village's Tsutsuji Park, showcases thousands of brilliantly colored azalea bushes spread across terraced hillsides. Visitors can stroll through sweeping displays of pink, red and white blooms while enjoying panoramic views of the surrounding mountains and coastline. The festival also features local food, cultural performances and family-friendly activities, making it a vibrant seasonal celebration of Okinawa's natural beauty.



## IE LILY FESTIVAL

*Mid to Late Apr. - Early May*

The Ie Lily Festival, held each spring on Ie Island, celebrates the peak bloom of over one million Easter lilies that blanket the island's coastal fields. Visitors can wander through vast white flower gardens with stunning ocean backdrops, creating some of Okinawa's most picturesque seasonal scenery. The festival also includes local food booths, cultural events and island specialties.

**PRO TIP:** Bring your bike on the ferry and ride around the whole island!





## NAHA HARI

*May 5 (During Golden Week)*

The Naha Dragon Boat Race, or Naha Hari, is a centuries-old maritime tradition held during Golden Week at Naha Port. Teams race beautifully decorated dragon boats in fast-paced heats that honor prayers for safe seas and a bountiful fishing season. The festival atmosphere includes food stalls, music and community events, drawing large crowds to celebrate Okinawa's deep connection to the ocean.

**PRO TIP:** Take the ITT Tour and avoid having to find parking!



## EMERALD BEACH FIREWORKS | *Jul. 4*

The Emerald Beach Fireworks event lights up the evening sky over Motobu's famous white-sand beach with a dazzling summer display. Set against the clear waters of the East China Sea, the fireworks reflect beautifully across the shoreline, creating one of Okinawa's most picturesque seasonal spectacles. Families and visitors gather to enjoy food stalls, live entertainment and a relaxed festival atmosphere by the ocean.

**PRO TIP:** Expect large crowds and traffic on the way home will be a bit heavy.



## YONABARU TUG OF WAR *Late Jul. - Early Aug.*

The Yonabaru Tug of War is a centuries-old harvest ritual held each summer, featuring two massive handwoven ropes symbolizing opposing sides of the town. Participants from the community join together to pull the ropes in a lively contest believed to bring prosperity, good health and protection for the year ahead. Accompanied by traditional music, parades and festival stalls, the event highlights Yonabaru's strong cultural identity and community spirit.



## OBON *Aug.*

Obon in Okinawa (known locally as Shichigwachi) is a three-day observance when families welcome the spirits of their ancestors back home. Neighborhoods come alive with Eisa, a traditional drum-and-dance performance meant to honor the spirits and guide them safely back to the afterlife. Homes prepare offerings, incense and prayers at the family altar.

**PRO TIP:** Most neighborhoods have their own group; go outside in the evenings and you can usually hear them practicing.

## NAHA TUG-OF-WAR

*Oct. 13*

The Naha Tug of War, known as Naha Ōtsunahiki, is one of Okinawa's most iconic festivals and features one of the largest ropes in the world, weighing several tons. Thousands of participants join in pulling the massive East and West ropes, a tradition believed to bring good fortune, peace and prosperity to the city. The event is accompanied by lively parades, traditional performances and a festive atmosphere that fills the streets of downtown Naha.

**PRO TIP:** Stay until the end where everyone gets to cut off a piece of the rope to take home!



## 10,000 EISA FESTIVAL

*Early Autumn*

The 10,000 Eisa Festival in Okinawa brings together thousands of dancers from groups across the island to perform traditional eisa in a massive, synchronized celebration. Held each autumn in Naha, the event fills the streets with the sound of drums, chanting and vibrant costumes as performers parade and dance in unison. It's one of Okinawa's most energetic cultural showcases, celebrating youth, community pride and the spirit of Obon.



## SHURI CASTLE FESTIVAL

*Early Nov.*

The Shuri Castle Festival is one of Okinawa's most elegant cultural events, celebrating the traditions of the former Ryukyu Kingdom. Held each autumn, it features reenactments of royal court ceremonies, vibrant parades and classical music and dance performances within the grounds of the historic Shuri Castle. The festival offers a rare opportunity to experience the pageantry, artistry and regal atmosphere of Ryukyu-era Okinawa.

**PRO TIP:** Keep an eye out for the news on the castle reopening after its long awaited reconstruction.



## SOUTHEAST BOTANICAL GARDENS ILLUMINATIONS

*Late Oct. - May*



The Southeast Botanical Gardens Illuminations turn the expansive garden grounds into a sparkling winter spectacle with millions of lights woven through tropical plants and palm-lined paths. Visitors can enjoy themed light zones, glowing tunnels and reflections shimmering across ponds, creating a uniquely Okinawan take on holiday illuminations. The event's mix of nature, color and festive atmosphere makes it a popular seasonal attraction for families and travelers alike.

## THE MURASAKI MURA LANTERN FESTIVAL

*Dec. - Mar.*



The Murasaki Mura Lantern Festival transforms the traditional Ryukyu village theme park into a glowing wonderland each winter, with thousands of colorful lanterns illuminating its streets and courtyards. Visitors can wander through tunnels of light, artistic lantern displays and photo spots that highlight Okinawa's cultural motifs. The warm, enchanting atmosphere makes it one of the island's most magical seasonal events.

**PRO TIP:** Don't miss the projection show.

*Please check dates and times before venturing out as they may change!*

### **Kadena ITT**

(Information, Tickets & Travel) is a service on Kadena Air Base that provides U.S. military members, their families and authorized personnel with discounted tickets, tours and travel assistance around Okinawa and beyond.

Get your tickets to these local attractions, cultural events and off-island destinations, making it easier for the base community to explore Japan. ITT also offers support with reservations, transportation and travel planning. Visit [KadenaFSS.com](http://KadenaFSS.com) for more!

# FAMILY

## FAMILY CHILD CARE

634-0514

### Need Child Care for an Appointment?

**Military Spouse Appointment Care (MSAC) provides short-term, hourly child care through certified Family Child Care (FCC) providers at Kadena Air Base.**

To qualify, spouses must meet the following criteria:

- Be married to an active-duty or activated Reserve/Guard member
- Live, work or be assigned to Kadena AB
- Have no other adult available to provide child care

### Covered appointments include:

- Medical appointments
- Job interviews or employment-related training
- Classes hosted by the Military and Family Readiness Center (MFRC), chaplain or medical agencies

*Note: Volunteer activities are not eligible for coverage.*



TEEN CENTER

# YAKINIKU

and **Movie**  
**night**

Friday, January 23  
Teen Center

Join us for two hours of all-you-can eat at our favorite yakiniku restaurant, Yakiniku Goen. After we have had our fill, we will return to the Teen Center to watch movies until 10 p.m. (Sign up in CYPBMS)





# Membership Appreciation Party

Friday, January 9 | 4 p.m.  
Teen Center

Join us for food and fun as we announce  
our Teen of the Month.

## TEEN CENTER

634-8443 | Bldg 439



### Recreation Room Hours

Mon: 2 - 5:30 p.m.

Tue: 1 - 5:30 p.m.

Wed - Fri: 2 - 5:30 p.m.

## YOUTH CENTER

634-0500 | Bldg 1849



### Membership Appreciation Day

Friday, January 30 | 3:30 p.m.

Members only

## INSTRUCTIONAL CLASSES

### Open Now for Enrollment!

*All classes are once a week to total 4 per month unless  
otherwise specified.*

#### Cheer

Tiny Cheer | Ages 5 - 7

Mini Cheer | Ages 8 - 9

Youth Cheer | Ages 10 - 12

Each class is \$55 per month

#### Computer & Language with Koeigo

S'TEAM | Ages 6 - 18

Animation | Ages 11 - 18

3D Design | Ages 11 - 15

Robotics | Ages 11 - 15

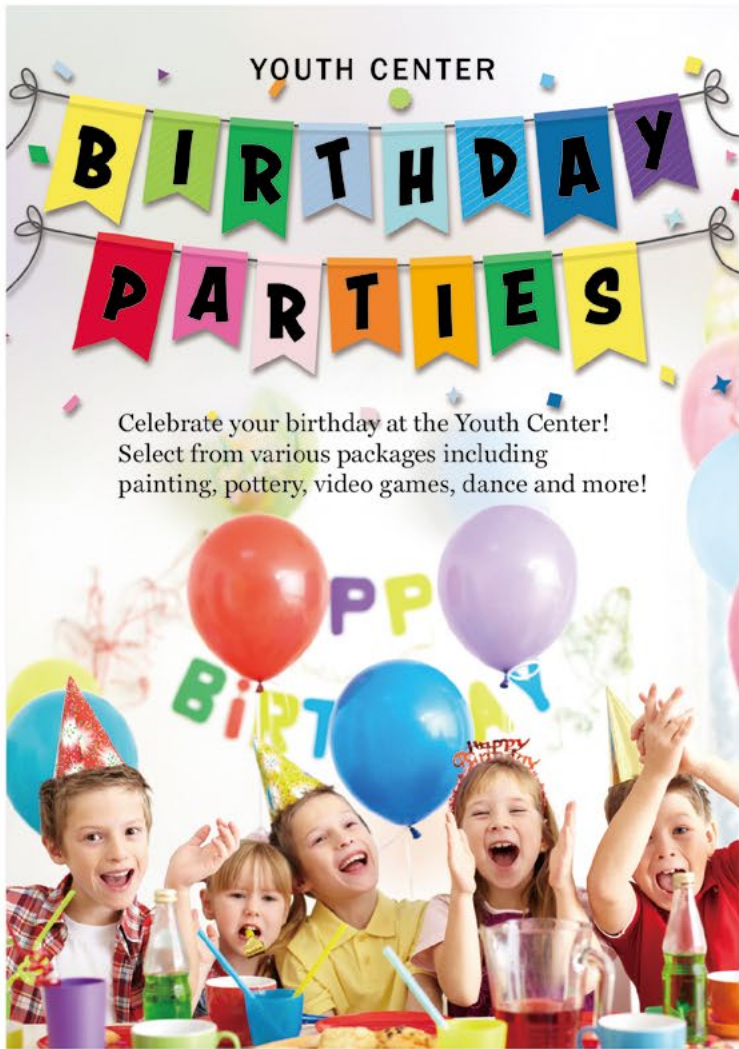
Japanese | Ages 11 - 18

Digital Art | Ages 6 - 15

Programming | Ages 6 - 15

\$60 per month





YOUTH CENTER

# BIRTHDAY PARTIES

Celebrate your birthday at the Youth Center! Select from various packages including painting, pottery, video games, dance and more!



**LASER TAG coming soon!**

**Dance**

- Introduction to Hip-Hop  
Ages 7 and over | \$30 per month  
2 classes per month
- Pre-Ballet  
Ages 3 - 4 | \$45 per month
- Introduction to Ballet  
Ages 5 - 7 | \$45 per month
- Ballet 1  
Ages 7 - 9 | \$55 per month
- Jazz Theatre 1  
Ages 6 - 8 | \$45 per month
- Lyrical Modern  
Ages 6 - 8 | \$45 per month

**Gymnastics**

- Daddy, Mommy & Me Gymnastics  
Ages 18 mos - 2 yrs | \$45 per month
  - Pre-K Gymnastics  
Ages 3 - 4 | \$45 per month
  - Gymnastics 1  
Ages 5 - 8 | \$55 per month
  - Gymnastics 2/3  
Placement required | \$55 per month
- Teams, placement, price and time vary.*

**Theatre**

- Ages 9 - 12 | \$60 per month  
2 classes per month

**Karate**

- White Belt Class 1  
Wednesdays | 6:30 - 7 p.m.  
\$45 a month | 1 class a week, 4 classes a month
- White Belt Class 2  
Wednesdays | 7 - 7:30 p.m.  
\$45 a month | 1 class a week, 4 classes a month
- Intermediate Class  
Tuesdays and Thursdays | 6 - 6:45 p.m.  
\$60 a month | 2 classes a week, 8 classes a month
- Placement class — Sensei Mason must approve enrollment
- Advanced Class  
Tuesdays and Thursdays | 6:45 - 7:30 p.m.  
\$60 a month | 2 classes a week, 8 classes a month
- Placement class — Sensei Mason must approve enrollment

**Pottery**

- Pottery 1  
Ages 5 - 8 | \$65 per month  
2 classes per week, 8 classes per month
- Pottery 2  
Ages 9 and over | \$70 per month  
2 classes per week, 8 classes per month

**Yoga**

- Yoga 1 | Ages 4 - 8
- Yoga 2 | Ages 9 and over  
\$45 per month

# COACHES NEEDED

Discover your true calling as a volunteer coach and make a significant impact on the lives of our youth with Kadena Youth Sports & Fitness!

Contact Youth Sports today!



YOUTH SPORTS & FITNESS  
634-9126 | Bldg 108

## KADENA EXCHANGE



## SCHOOL MEAL PROGRAM

The Exchange School Meal Program is proud to offer healthy, flavorful STAR LUNCHES daily!

A STAR LUNCH, at a minimum, must include at least three of the meal components, including either a fruit or vegetable. Students may request additional fruits or vegetables at no extra cost.

**BREAKFAST?** Check with your students' school to see if breakfast is offered!



<https://www.aafes.com/about-exchange/school-lunch-program/>



PAID AD



PRESENTING PARTNER:

**RAYMOND JAMES**



**Trayden Pehrson**



Runner-up  
**Raelyn Connick**



PRESENTING PARTNER:

**RAYMOND JAMES**



**Chloe Robertson**



Runner-up  
**Sasalak Faulkner**

# Congratulations to our nominees!



**Daysha Gallegos**



**Akiva Krupnick**



**Cora Dudley**



**Sami Tabuchi**

Sponsored in part by:



No federal endorsement of sponsor intended.



## MILITARY & FAMILY READINESS CENTER

634-3366 | Bldg 220

### TSP Millionaire

Monday, January 5 | 9 - 11 a.m.

This workshop provides an overview of the TSP Roth & Traditional savings/retirement plan.

### Pre-Separation Brief

Wednesday, January 7 and 21 | 8 - 11:30 a.m.

Education Center, Building 59, Room 115

Step 2 of the congressionally mandated Transition Assistance Program (TAP) for service members preparing for separation or retirement from the military.

### NEO Warden Training

Wednesday, January 7 | 9 - 10 a.m.

Kadena M&FRC, Building 220

This training is for newly assigned NEO Wardens to learn the basic roles and responsibilities assigned to them as NEO Wardens.

### EFMP 101

Wednesday, January 28 | 11 a.m. - Noon

Kadena M&FRC, Building 220

Gain a deeper understanding of the EFMP process and learn about the local resources. Call 634-3366 to register.

### Smooth Move

Friday, January 9 | 9:30 a.m. - 12:30 p.m.

Schilling Community Center, Building 455

This workshop is designed to assist with a smooth transition to your next base and includes useful information from base agencies including Legal, Housing, TMO and more. Meets the financial touchpoint for PCS training requirements.

### Language Exchange

ランゲージエクステンジ!!

Friday, January 9, 23 and 30 | 11:30 a.m. - 12:30 p.m.

A language exchange group for both Japanese and English speakers. Learn about language and culture from native speakers and practice your conversation skills.

### TAP Workshop

January 13 - 15 | 8 a.m. - 4:30 p.m.

Education Center, Building 59, Room 115

Step 3 of the congressionally mandated Transition Assistance Program (TAP) for service members preparing for separation or retirement from the military. Open to retiring service members and their spouses.

### Post-Deployment Brief

Tuesday, January 13 and 27 | 9 - 10 a.m.

Open to all members deploying for 30 days or more. Family members are encouraged to attend.

### Pre-Deployment Brief

Wednesday, January 14 and 28 | 9 - 10 a.m.

Open to all members deploying for 30 days or more. Family members are encouraged to attend.

### Japanese Survival Language Class

Wednesday, January 14 | 10 - 11 a.m.

A crash course to teach you basic Japanese words and phrases to survive in Japan.

### Japanese Conversation Class

Wednesday, January 21 | 10 - 11 a.m.

If you're interested in learning Japanese speaking, writing and grammar, our Japanese language classes are for you! Class will cover grammar, vocabulary and Hiragana.

### Commander's Key Support Program Initial/ Immersion Training

Wednesday, January 21 | Noon - 4 p.m.

Education Center, Building 59, Room 116

This training is for newly appointed Commander's Key Support Program Liaisons/Mentors appointed by unit Commander.

### Department of Labor Employment Track

January 22 - 23 | 8 a.m. - 4:30 p.m.

Education Center, Building 59, Room 115

Part of the congressionally mandated Transition Assistance Program (TAP) for service members preparing for separation or retirement from the military. Open to transitioning service members who have completed the TAP Workshop and their spouses.

### TAP Career & Credential Exploration Track (C2E)

January 27 - 28 | 8 a.m. - 4:30 p.m.

Education Center, Building 59, Room 115

Part of the Transition Assistance Program (TAP) for service members preparing for separation or retirement from the military. Open to transitioning service members and their spouses.

*All classes are free and open to all DoD ID Cardholders unless otherwise specified.*



VIEW AND REGISTER FOR  
CLASSES HERE!



CHECK OUT OUR  
OKINAWA JOB BOARD  
HERE!

M&FRC

# Navigating Federal Employment

Tuesday, January 6 | 9 - 11 a.m.  
Education Center, Building 59, Room 115

This class provides a deep dive into understanding federal employment including resume tips and best practices for conducting a job search.



M&FRC

# Japanese Calligraphy

Wednesday, January 7 | 10 - 11:30 a.m.

Learn how to write Kanji with an ink brush!  
This class is designed specifically for adults; all supplies are provided.

# 書道



**Expand your world  
with English**  
英語で世界を広げよう  
영어로 세계를 확장하세요  
**Expándete el mundo  
con inglés**

Contact your local UMGC office to learn more  
about our ESL and Bridge Programs or visit:

[asia.umgc.edu/esl](http://asia.umgc.edu/esl)

[asia.umgc.edu/bridge](http://asia.umgc.edu/bridge)



#### Contact Us

UMGC Kadena

Phone: 03-4545-1450

Email: [kadena-asia@umgc.edu](mailto:kadena-asia@umgc.edu)

Education Center Bldg. 59, 2nd floor



UNIVERSITY OF MARYLAND  
GLOBAL CAMPUS | ASIA

# EDUCATION & EMPLOYMENT



## KADENA EDUCATION & TRAINING

Bldg 59 3rd floor | Education & Training  
634-1500 | [kadenaeducationoffice@us.af.mil](mailto:kadenaeducationoffice@us.af.mil)  
Mon - Thu | 8 a.m. - 3 p.m., Fri | 8 a.m. - Noon

### DoD SkillBridge Briefing

January 16 | 2 p.m.

### Face-to-Face TA Brief for First-Time TA users

January 7 and 21 | 2 p.m.

Preparing for the 2026 E5/6 Promotions testing:

1. Check eligibility in DVR
2. Contact Unit WAPS Monitors for questions
3. Check emails for updates from AFPC/Pearson Vue
4. Study! <https://www.studyguides.af.mil/>

Register in AFVEC → Ed Center info banner on right → Ed Center Events

### On-Base Schools

UMGC (2nd floor) | 634-2206  
[kadena-asia@umgc.edu](mailto:kadena-asia@umgc.edu)  
ERAU (2nd floor) | 634-5083  
[kadena.campus@erau.edu](mailto:kadena.campus@erau.edu)

### UPCOMING PME Courses

January 8 - February 12 | SNCOA: 26 - C  
January 12 - February 13 | SOS: 26 - B  
January 26 - February 13 | CMSA: 26 - C  
Have you recently completed your EJPME (previously SEJPME)? Send a copy of your certificate to [kadena.pmemanagementoffice@us.af.mil](mailto:kadena.pmemanagementoffice@us.af.mil) to update your records!

To sign up for the AFOQT, TBAS, EDPT, DLPT or DLAB, email [kadena.educationservicestesting@us.af.mil](mailto:kadena.educationservicestesting@us.af.mil).



**Featured: Emery Lanes**  
One of many opportunities with the 18th Force Support Squadron

# KADENA FSS IS HIRING!

**Join our growing team and make a difference!**  
Exciting opportunities & excellent benefits.



## Why work at Emery Lanes

At Emery Lanes, every day brings something new and full of energy. The team works together to create fun, memorable experiences for guests — whether it's helping a first-time bowler, planning a party or supporting league players. It's rewarding to make a positive impact on the Kadena community while working in a lively, team-focused environment.

If you're enthusiastic, friendly and love helping others, you'll be a great fit at Emery Lanes, where you can grow your skills in teamwork, customer service and community connection.

Apply today  
[www.usajobs.gov](http://www.usajobs.gov)

## NAF HUMAN RESOURCES

634-2330 | Bldg 721

Email: [18fss.naf.hro@us.af.mil](mailto:18fss.naf.hro@us.af.mil)

18 FSS and 718 FSS are Equal Employment Opportunity (EEO) employers.



Scan here for the full FSS directory:



# Kadena FSS Dining

Online ordering and delivery available at [www.kadenafss.com](http://www.kadenafss.com)  
OR download the **OKI GRUBS** App



## Banyan Tree Pizza

966-7426 | 036-868-2212

Daily 11 a.m. - 10 p.m.

**Delivery** | 966-7375 | 036-868-2274

Go to <https://orderonlinemenu.com/BanyanTreePizzaGrill> to order online

Daily 11 a.m. - 9:30 p.m.

## Café Latte

966-7416 | 036-868-2205

Tue - Sat 6:30 a.m. - 2 p.m.  
Sun and Mon Closed

## Chili's Grill & Bar

966-7359 | 010-1512-672-7359

Daily 11 a.m. - 10 p.m.  
Holidays Regular hours

## Chili's Delivery/To-Go

Delivery | 966-7366 | 036-868-2210

Daily 11 a.m. - 10 p.m.

**To-Go** | 966-7360 | 036-868-2209

**Food Truck & Catering** | 966-7359 | 010-1512-672-7359

## Chippers at Chibana Golf Course

966-7367 | 036-868-2368

Mon - Fri 7 a.m. - 7 p.m.\*

Sat and Sun 6 a.m. - 7 p.m.\*

\*last order at 6 p.m.

## Dining Facilities

### Marshall

Mon - Fri	Breakfast	5:30 - 8 a.m.
	Lunch	10:30 a.m. - 1 p.m.
	Dinner	4 - 7:30 p.m.
	Midnight Meal	10 p.m. - 12:30 a.m.

Weekends, Holidays and down days

Brunch	6:30 a.m. - 1 p.m.
Dinner	4 - 7 p.m.
Midnight Meal	10 p.m. - 12:30 a.m.

## It's Just Wings

966-7250 | 036-868-2258

Mon - Sun 11 a.m. - 10 p.m.

## Seaside

966-7401 | 036-868-2213

Mon and Tue Closed

Wed - Fri 10:30 a.m. - 9 p.m.

Sat - Sun 9 a.m. - 9 p.m.\*

\*Weekend Brunch ends at 2 p.m.

Holidays Regular Hours\*\*

\*\*Except Thanksgiving, Christmas and New Year's Day

## Surfside Grill & Bar at Okuma Beach

631-1805 | 098-962-1805

Open regular hours on holidays

Breakfast 8 a.m. - 10 a.m.

Lunch 11 a.m. - 3 p.m.

Dinner 3 - 9 p.m.

(last order 8:30 p.m.)

## Tee House Restaurant

966-7429 | 036-868-2214

Daily 6 a.m. - 3 p.m.

## The Rocker Club

**Kazoku Place** | 966-7380 | 036-868-2227

Mon - Thu Breakfast/Lunch 6 a.m. - 2 p.m.

Dinner 4 - 9 p.m.

Fri Breakfast/Lunch 6 a.m. - 2 p.m.

Dinner 4 - 9:30 p.m.

Sat Breakfast/Lunch 7 a.m. - 2 p.m.

Dinner 4 - 9:30 p.m.

Sun Closed

Holidays Breakfast/Lunch 6 a.m. - 2 p.m.

Dinner 4 - 9 p.m.

## Hanabi's Restaurant & Bar

Sun - Thu 11 a.m. - 10 p.m.

Fri and Sat 11 a.m. - 2 a.m.

## The Daily Grind

Mon - Fri 6 a.m. - 9 p.m.


Weekends and Holidays 7 a.m. - 9 p.m.

# #VENTUREinOki

By Lydia Rothstein

A new year brings a fresh chance to explore **Okinawa** in all its winter beauty. January on the island is filled with color, culture and cozy moments worth savoring. In this month's #VentureInOki feature, we're highlighting three memorable ways to start the year: blooms, bustle and bonfire nights.

Winter still brings plenty of color to Okinawa. The island's seasonal blooms paint the fields in bright purples and pinks, offering a peaceful retreat and a stunning backdrop. [@satyinokinawa](#) captures this beautifully, enjoying the soft winter sun among towering blossoms, a reminder that Okinawa's beauty thrives long past summer.

 Yamashiro Chaen



From traditional architecture to the energy of a lively city center, Kokusai Street remains one of the island's most iconic places to explore at the start of the year. Whether you're browsing shops, sampling local treats or simply soaking in the atmosphere, every corner has something to discover. [@fara\\_saira](#) brings the scene to life in this snapshot taken in front of Okashigoten Kokusai Street Matsuo Branch, perfectly capturing the excitement that makes Naha a must-visit in any season.

 Kokusai Street

Cool evenings call for cozy gatherings. Bonfire nights bring friends and families together for warm drinks, sizzling snacks and laughter shared under string lights. [@\\_simplynikkie](#) shares this heartwarming moment, enjoying a glowing fire on a crisp winter night.

 Bonfire Cafe

January in Okinawa is colorful, cultural and full of welcoming warmth. Begin your year with an adventure, and don't forget to tag #VentureInOki for a chance to be featured.





Lunch & Sweets Buffet

# THE SNOWY & the WITCH'S MIRROR

A Sweet Tale of Snow White

SUN P.H.  
SAT MON

2025 10/4 SAT 2026 1/12 MON

DoubleTree by Hilton Okinawa Chatan Resort (2F)  
Restaurant "MaTiira"

43 Mihama Chatan-cho Nakagami-gun Okinawa 904-0115, Japan  
TEL 098-901-4600 FAX 098-901-4601

**TIME** 12:00~14:30 **PRICE** Adult ¥4,500/Child ¥1,500[6-12]  
\* L.O. 13:45 \* Price includes tax and service charge

