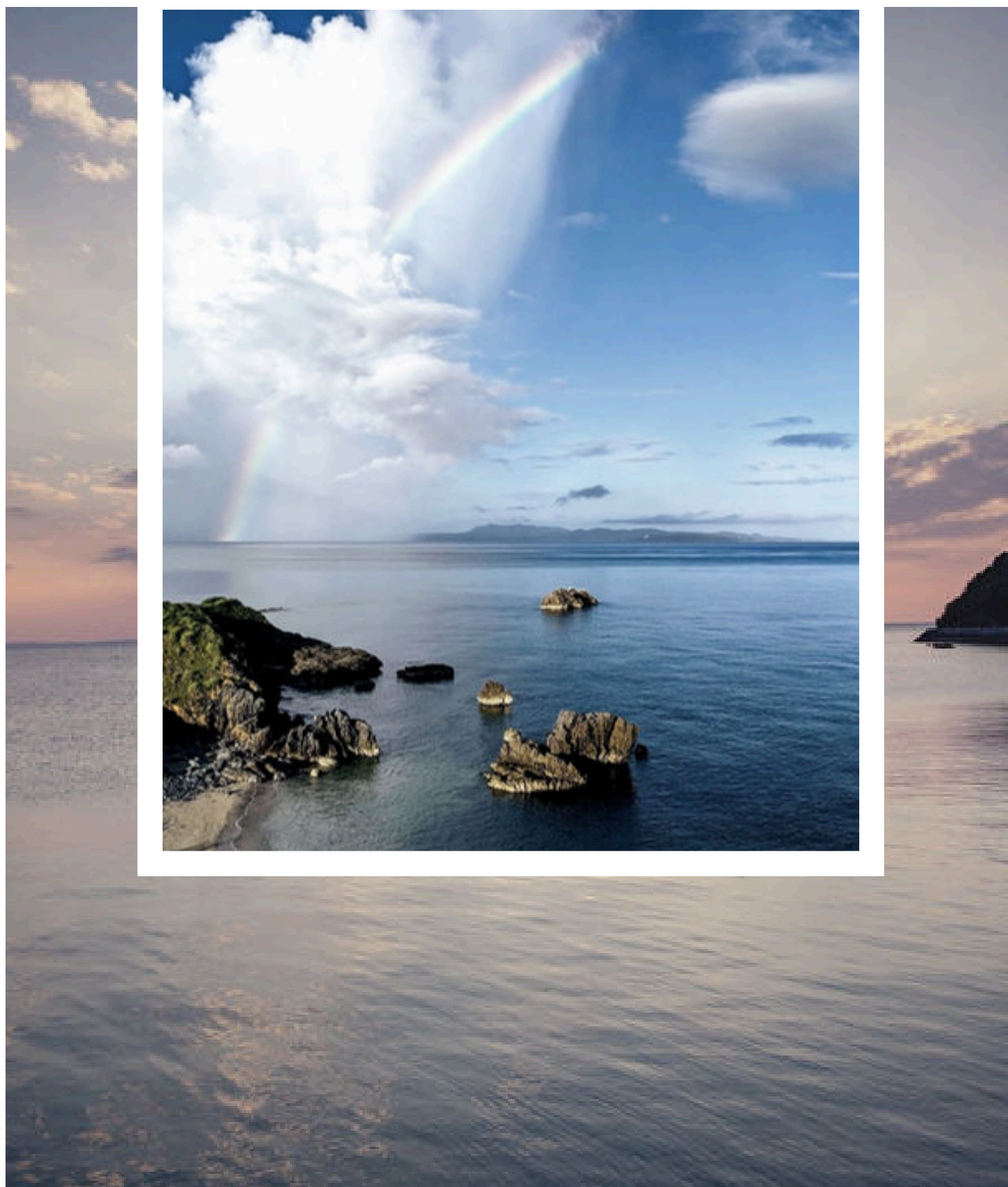


# OKUMA BEACH





# OKUMA BEACH TABLE OF CONTENTS

**2** Welcome Letter

**3** Okuma Natural Assets

**4** Accommodations

**8** Recreation

**12** Dining & Entertainment

**13** Emergency Policies & Procedures

**15** Important Phone Numbers

# Welcome

Our Team would like to thank you for choosing the Okuma Recreation Facility. It is our goal to provide our customers with a memorable and relaxing stay. We encourage you to make Okuma your home away from home.

If there is anything we can do to make your stay at Okuma better, please do not hesitate to let us know by calling the front desk at 631-1990 / 098-962-1990. We appreciate your feedback. Ask a manager or staff member for a customer comment card or fill one out electronically at <http://ice.disa.mil>





## On Beach...

Loggerhead sea turtles typically nest in Okinawa from April through September as well as Okuma. Mother turtles bury an average 100 - 126 eggs that take about 60 days to hatch. They have to dig themselves out their underground nest shortly after hatching. They then follow the reflection of the moon to find the ocean. That's why Okuma uses conservation style lighting at the Beachfront campground. The red and Amber lights help reduce disorientation of the hatching turtles.

# Okuma Natural Assets

## On Land...

Okuma is home to nearly 500 species of flora and fauna. Some species are at risk of becoming endangered according to a natural resources survey conducted in 2018. Of the flora, seven species were determined to be significant, which means near threatened or vulnerable. Two examples include the whisk fern and sea ebony. Of the fauna, eleven species were also categorized significant. The land hermit crab and the purple land hermit crab are now classified as protected. Some examples of unique animals you can find at Okuma include the western osprey, Japanese pygmy woodpecker, Okinawa five-lined skink, and the Orii flying fox. You can enjoy walking the hiking trails to look for all of these birds, crustaceans, and lizards. Enjoy the beauty of nature. While enjoying your time at Okuma please remember that while very beautiful, they are wild animals. Please leave them in their natural habitat.

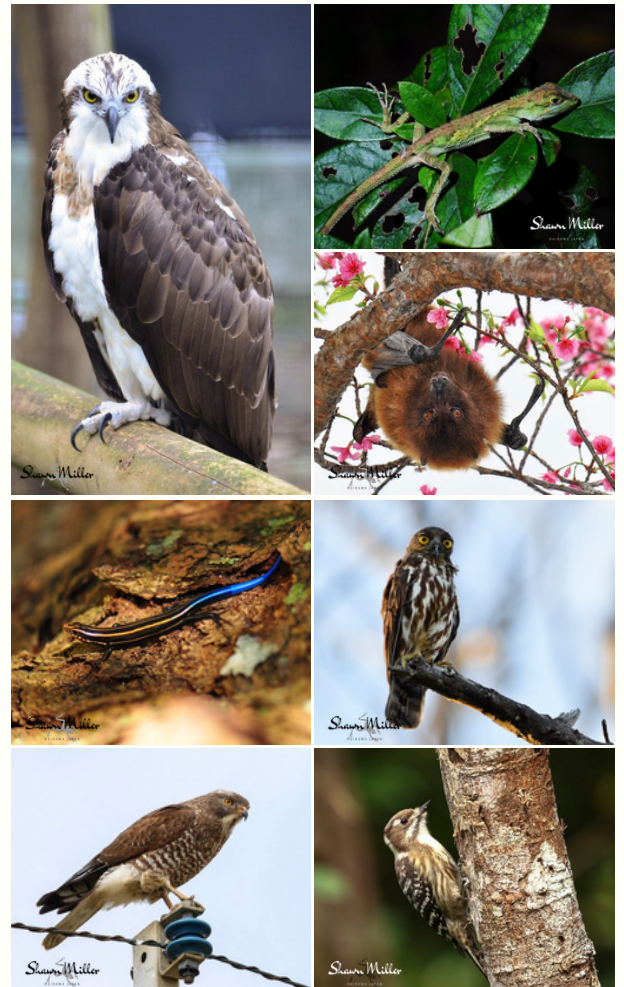
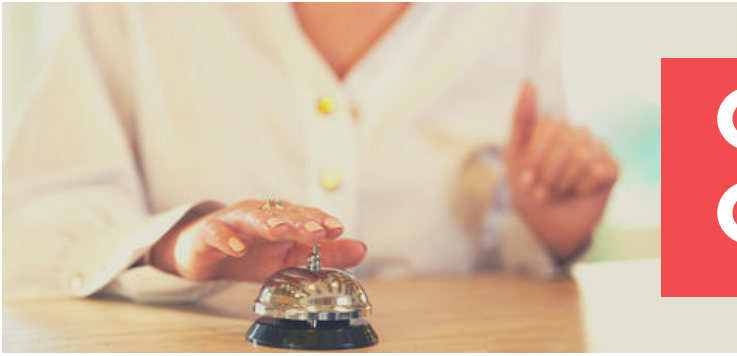


Photo by Shawn Miller

## PET-FRIENDLY ROOM GUESTS

With all of the wildlife present at Okuma, it is important to remember that the new pet-friendly rooms have regulations in place to protect the delicate ecosystem the facility is located on. These regulations ensure your pet and local wildlife don't

have the opportunity interact. This allows local wildlife, pets, and guests to have a safe and enjoyable experience.



**Check-in • 15:00**  
**Check-out • 11:00**

## Guest Responsibilities

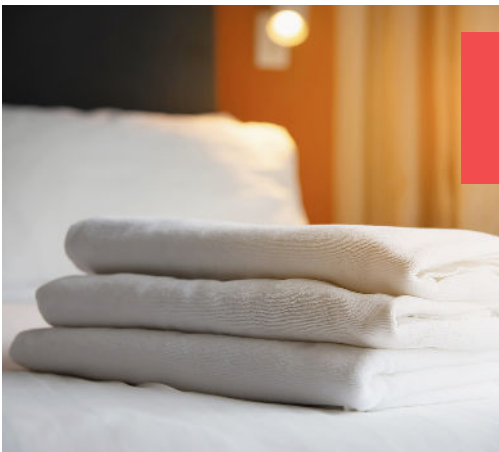
Quiet Hours 22:00 to 06:00

### Not Permitted

- Glass Containers
- Fishing Spears
- Weapons
- Fireworks
- Sling Shots
- Bonfires
- Smoking w/in 50 feet of any building entryway
- Pets only allowed with a reservation of a pet friendly suite. Reservations must be made by calling Reservation Desk at 098-962-1991/1992.



**\*\*Non-compliance may result in occupants being asked to leave and/or a room cleaning fee.**



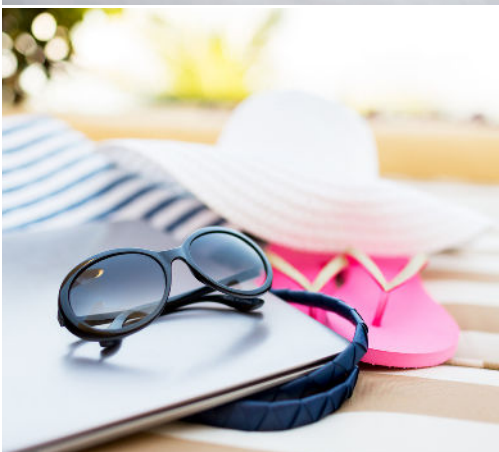
## Guest Services

### Room Amenities

- Shampoo/Conditioner, Soap, Hair Dryer

### Other Services

- Laundry Facilities - 24/7 laundry facility in Bldg. 111. Please purchase laundry supplies from the Beach Mart
- Vending Machines - located at the Gate and Beach Mart store
- ATM - located inside the entrance of the Surfside Grill & Bar
- Cashier Services - located at the Administrative Office across from Surfside Grill & Bar
- Wi-Fi Internet Services
- Taxi Service - If you need assistance, call the Coral Reef Inn
- DVD Rentals - DVD rentals are available at the Beach Mart for free
- Massage



# ACCOMMODATIONS

## AI PRIVATE BEACH COTTAGE

---

The Ai Beach Cottage is the perfect couple's getaway! Featuring your very own private beach, the Ai Beach Cottage is sure to be the romantic home away from home you've been dreaming of. Open to adult couples only. **Reservations must be made by calling the Reservation Desk.**

**Maximum occupancy • 2 adults**

## SUNSET VILLA

---

This unique accommodation has a master bedroom with two queen size beds and a sleeper sofa, a living room with a sleeper sofa, and an outdoor patio, picnic table and a charcoal grill. The bedroom and living rooms have a TV & DVD player. The living room also has a sink, refrigerator, microwave and coffee maker.

**Maximum occupancy • 8 people**

## CABANA ROOMS

---

### STUDIO\*

The studio comes with one queen size bed.

**Maximum occupancy • 2 people**

### STUDIO PREMIER\*

Studio premier rooms come with two queen size beds.

**Maximum occupancy • 4 people**

### SUITE\*

Suites come with two queen beds and a large sofa that unfolds into a double bed.

**Maximum occupancy • 6 people**

### SUITE PLUS\*

The Suite Plus comes with two queen beds, a large sofa that unfolds into a double bed, and a kitchenette. The maximum stay is ten days, but may be extended if a vacancy exists.

**Maximum occupancy • 6 people**

### **Pet Friendly Room - Suite Plus\***

The room comes with two queen beds, a large sofa that unfolds into a double bed, and a kitchenette. **Reservations must be made by calling the Reservation Desk.**

**Maximum occupancy • 6 people**

## OASIS BUNGALOW

---

The Oasis Bungalow is equipped with a TV & DVD player in each room & living room, two refrigerators, microwave, coffee pot, kitchenware, (dishes, silverware, cups), linens and private picnic area, two picnic tables & grill. **Reservations must be made by calling the Reservation Desk.**

**Maximum occupancy • 10 people**

## HAI SAI CABINS

---

This spacious beach cabin comes with 2 bedrooms with a queen size bed, 1 sofa bed and TV & DVD player.

Kitchen equipped with refrigerator, microwave, coffee pot, and dining table, living room with sofa, coffee table. Or dine outside on the front with picnic table and charcoal grill.

**Maximum occupancy • 6 people**

## TURTLE'S NEST BEACH HOUSE

---

This spacious beach house comes with 2 bedrooms with a queen size bed, a large loft with 2 sofa bed and coffee table. TV & DVD player in each room.

Kitchen equipped with refrigerator, microwave, coffee pot, kitchenware (dishes, silverware, cups) and dining table, living room with reclining chair, sofa, coffee table. Or dine outside on the front with picnic table and charcoal grill.

**Maximum occupancy • 10 people**

## DUNES CONDO

---

The roomy Dunes Condo is perfect for groups of all sizes. It has seven bedrooms including a living/dining room, kitchenette/laundry room, and its own picnic area. **Reservations must be made by calling the Reservation Desk.**

**Maximum occupancy • 18 people**

## BAYSIDE COTTAGE

---

This comfortable cottage has a large bedroom/living room and a small bedroom. The large bedroom/living area has two queen size beds and a sleeper sofa. It also has a TV, DVD player, sink, refrigerator, microwave, and coffee pot. The small bedroom has one queen sized bed, a TV, and DVD player.

**Maximum occupancy • 8 people**

## PALM GROVE CABINS

---

The Palm Grove Cabins comes with one queen bed and a sleeper sofa that unfolds into a double bed. It also has a TV & DVD player, refrigerator, microwave, and BBQ grill.

**Maximum occupancy • 4 people**

\*All cabana rooms are equipped with TV, DVD player, microwave, and refrigerator. The maximum stay is ten days, but may be extended if a vacancy exists.

# HOUSEKEEPING SERVICES

To support environmental sustainability, housekeeping service is provided every other day for guests staying multiple consecutive nights.

During your stay, services are scheduled as follows:

- Day 1: Check-in
- Day 2: No service
- Day 3: Light service
- Day 4: No service
- Day 5: Full service cleaning

## Light service includes:

Towel replacement, trash removal, and amenity replenishment.

## Full cleaning service includes:

Bed making, linen replacement, bathroom and surface cleaning, dusting, and a full room refresh.

For additional housekeeping requests, please contact the Front Desk by 9:00 a.m.

☎ 098-962-1991 / 1992

✉ [okuma.reservations@kadenafss.com](mailto:okuma.reservations@kadenafss.com)



**Service will not be conducted if a "Do Not Disturb" sign is displayed.**

**Thank you for your understanding and cooperation.**

**Your comfort is our priority.**



# RESERVATION INFORMATION

## MAKING RESERVATIONS

### Off season booking

(1 October - 31 March)

Book up to 11 months in advance

### On season booking

(1 April - 30 September)

Book up to 6 months in advance

- Call the Reservation Desk between the hours of 08:00 - 17:00
- Email [okuma.info@kadenafss.com](mailto:okuma.info@kadenafss.com)
- Reserve online at <http://kadenafss.com/okuma-beach>
- Any special requests for equipment or room assignments must be submitted at least 10 days prior to check-in
- Reservations are limited to two rooms per sponsor per visit (Includes cabins and cabanas)
- Reservations are non-transferable
- A first night's deposit is required to confirm a reservation

## CANCELLATIONS/REFUNDS

### FULL REFUND

- Cancellations or changes made 48 hours prior to 15:00 on the date of check in.

### NO REFUND

- Cancellations or changes made within two days prior to date of check in.

## Group Reservations

- Off season only (1 October - 31 March)
- Limited to log cabins, a maximum of ten suite type rooms, and six studio type rooms.
- Additional rooms may be requested if available.
- If a registered group reserves 10 or more rooms they are eligible for off-season group rate discount. (Discount cannot be used with other special offers or Member Plus Program)
- Sunday - Thursday bookings may be reserved 11 months in advance.
- Group reservations must be paid 30 days prior to stay.
- Payments must be made by cash, check, or credit card.

## Group Cancellations

Full refund • Cancellations must be made at least 30 days prior to check in.

50% refund • Cancellations made 29 - 16 days prior to check in.

No refund • Cancellations made 15 - 0 days prior to check in.

\*Refunds will be given in the original form of payment via electronic fund transfer or credit card to the group point of contact.

## Event Bookings

Let Okuma host your next event. The Okuma Events Center is intended for group functions to include but not limited to conferences, retreats, meetings, trainings, briefings, workshops, seminars, and parties. Eligible groups or individual sponsors can reserve it for a minimal daily rate. Eligible groups have priority and can book the Events Center 2 - 11 months in advance (Only 1 October - 31st March). Individuals or non-group reservation requests for the Events Center, including those that fall on weekends, can be made no earlier than 60 days prior to the requested date.



# CAMPING



## About Campgrounds

The best value for staying at Okuma is camping. There are two camping areas which allow campers to bond with and view nature.

The **Beach Front Campground** is located along Okuma's South Beach and provides a splendid view of the ocean. Quiet hours for the Camping Area are from 22:00 - 06:00.

The **Hillside Campground** sits high on a grassy knoll above turquoise waters. Quiet hours for the Camping Area are from 02:00 - 06:00.



## Where to signup?



[Our location for camping signup varies with the season.](#)

**1 June - 30 September**

### **GOLF SHACK**

Building 115

DSN • 631-1823

Daily • 09:00 - 20:00



**1 October - 31 May**

### **OUTDOOR RECREATION EQUIPMENT RENTAL**

South Beach Building 121

DSN • 631-1815

Daily • 09:00 - 17:00



\*Campers must register prior to erecting a camp site. A variety of camping supplies are available for rent to help make your stay more comfortable.



\* Camping with Pets available as monthly program. If you are interested, please check Okuma Facebook :-)



# LAND RECREATION

## Outdoor Recreation Equipment Rental

### Location

**1 June - 30 September**

Outdoor Recreation Equipment Rental (Bldg. 103)

**North Beach • 631-1816**

**1 October - 31 May**

Outdoor Recreation Equipment Rental (Bldg. 121)

**South Beach • 631-1815**

### Operation Hour

**1 October - 31 March**

Daily 09:00 - 17:00

**1 April - 30 September**

Mon - Fri 09:00 - 17:00

Sat, Sun & Holiday 08:00 - 17:00

## TENNIS

The tennis court is located next to the Event Center. Please limit your match to two hours so that others may play. Tennis rackets and balls are available at the Outdoor Recreation Equipment Rental. Please return borrowed items to the Outdoor Recreation Equipment Rental before it closes.

## BASKETBALL

Located adjacent to the Beach Front Campground and Building 117, this full outdoor court is available on a first-come, first-served basis. However, we do encourage shared use. Basketballs are free to check out from Outdoor Recreation Equipment Rental.

## SPEEDWAY GO-KART RACETRACK

Driver height requirement • At least 58" tall

Passenger height requirement • At least 40" tall

**\*Speedway track will not operate in adverse conditions.**

## GOLF SHACK

(Bldg. 115)

**Spring Break - 31 October**

**Daily : 09:00 - 20:00**

**1 November - Spring Break**

**Daily : 10:00 - 19:00**

Golf and Miniature Golf reservation is accepted at Golf Shack.

\*\*Golf cart rental after 17:00 is accepted here.

## HABU LINKS GOLF COURSE

Our golf course is a fun nine-hole, par three, executive course with some challenging holes for both the amateur and the experienced golfer. Come on out and take a swing at it!

## MINIATURE GOLF

Daily / Per round

18 holes course. 5 Stroke limit per hole. Each hole presents a different dare for a wide range of golf connoisseurs. So come and take a leap of faith with our miniature golf





# WATER RECREATION

The **Outdoor Recreation Equipment Rental** has all of your water activity and rental needs.

## LOCATION

**1 June - 30 September**  
Outdoor Recreation Equipment Rental (Bldg. 103)  
North Beach • 631-1816

**1 October - 31 May**  
Outdoor Recreation Equipment Rental (Bldg. 121)  
South Beach • 631-1815

## OPERATION HOUR

**1 April - 30 September**  
Mon - Fri: 09:00 - 17:00  
Sat, Sun & Holiday 08:00 - 17:00

**1 October - 31 March**  
Daily: 09:00 - 17:00

## ACTIVITY SIGN-UP

- Reservations can only be booked on the day of. No advance bookings will be accepted.
- No refunds for missed bookings. Bookings must be cancelled two hours prior to booking time to receive refund.
- Personal Flotation Device is required to be worn by all.
- Ages are provided by Red Cross as they adhere to the CPR and EFR guidelines for Emergency Situations.

**\*Activity availability depends on sea conditions which are determined by Local Weather Conditions! \*\*  
All items must be returned by 17:00 on date of rental.**

## RENTALS

As a COVID-19 protective measure, snorkels are not available for rent until further notice.

**Snorkel Vest** • Required for snorkeling on Okuma

**Snorkel & Mask**

**Fins**

**Wet Suit**

**Booties**

**Single & Double Kayak** • Ages 13 & up 13 & under must be accompanied by an adult

**Boogie/Skim Boards**

**Personal Flotation Device/Life Vest (FREE)**

**Lounge Chair & Umbrella**

**Fishing Set**

## SWIMMING AREA

Swim at your own risk when Lifeguard is not present.

Water operations are prohibited from sunset to sunrise.



# WATER RECREATION

The **Outdoor Recreation Equipment Rental** has all of your water activity and rental needs.

## OPERATION HOUR

**1 October - 31 March**

Daily: 09:00 - 17:00

**1 April - 30 September**

Mon - Fri: 09:00 - 17:00

Sat, Sun & Holiday: 08:00 - 17:00

## MOTORIZED WATER SPORTS

**Ski Boat**

**Wake boarding/skating**

**Water skiing**

**Knee boarding**

**Ski tubes**

**Leisure boat rides \*Five person maximum in the boat**

## JET SKI

Ages 16 & up • To drive Ages 6 & up • To ride Required to read and sign the jet ski rules, regulations, and damage liability prior to rental. Two person maximum per jet ski.

## BANANA BOAT SLED

Ages 6 & up Helmet and Personal Flotation Device required. Some restrictions may apply.

## TRIPS



### DIVE PROGRAM

Dive Trip (2 dives): Twice a day

Must reserve 3 days in advance.

Minimum of two divers and maximum of 8 divers

Certification card required to book the charter.

Dive Certification Course available

### CORAL CONNECTION SNORKEL EXCURSION

Daily • 90 minute tour

Complete Snorkel Set included.

Some restrictions may apply.

### GLASS BOTTOM BOAT TOUR

Daily • All ages

Must wear a Personal Flotation Device provided by Okuma.

# DINING & ENTERTAINMENT

## Surfside Grill & Bar



Dining at the Okuma Surfside Grill & Bar is an experience in and of itself. Whether enjoying the peaceful ambiance of restaurant dining, relaxing with a tasty beverage in the lounge or taking in the panoramic ocean view on the sunset patio our guests are sure to enjoy their time at the Surfside.

The a la carte menu features a wide assortment of seafood, burgers, steaks and brick oven pizzas! The Surfside takes pride in utilizing the most fresh local produce and continues to pursue more innovative ways to provide our guests the best dining experience.

The Surfside Grill & Bar also hosts weekly and monthly entertainment ranging from live music to family bingo! Family Bingo is every Friday at 19:00 on the Restaurant Patio and Kiddie Disco is every Saturday at 17:00 also on the Restaurant patio. Keep an eye on our social media page; [facebook.com/theokumabeach/](https://facebook.com/theokumabeach/) for information regarding larger monthly entertainment events! Schedule subject to change.

### Breakfast

08:00 - 10:00

### Lunch

11:00 - 15:00

### Dinner

15:00 - 20:30

### Breakfast Buffet

Peak Season

Saturday / Sunday / Observed Federal Holidays

08:00 - 10:00

**Sunrise Cafe** • 07:30 - 17:00

**Slots** • 07:30 - 22:00



We look forward to serving you and your family here!

Current as of June 2023

# EMERGENCY POLICIES & PROCEDURES

## Typhoon

### **TCCOR 4**

Destructive winds of 50 knots or greater are possible within 72 hours. TCCOR 4 will be continuously in effect as a minimum condition of readiness from 1 June to 30 November annually. Now is the time to stock-up on food and typhoon supplies.

### **TCCOR 3**

Destructive winds of 50 knots or greater are possible within 48 hours. Initiate a general cleanup around homes and office.

### **TCCOR 2**

Destructive winds of 50 knots or greater are anticipated within 24 hours. Remove or secure all outside items.

### **TCCOR 1**

Destructive winds of 50 knots or greater are anticipated within 12 hours. No school for DoDDS students. Staff and teachers will work normal hours, unless changed by DoDDS superintendent. Fill any containers you can use for water storage. If you live in low lying quarters, make arrangements to stay with a friend. Make a final check of food and other supplies.

### **TCCOR 1 Caution**

Destructive winds of 50 knots or greater are anticipated within 12 hours. Actual winds are 34 - 49 knots. All nonessential personnel will be released to their quarters at this time. DoDDS schools will close at this time. Staff and teachers return home or remain home. Base exchange, shops, Commissary, Shoppettes, Gas Station, Services facilities, Clubs, Restaurants, Recreational Facilities and Post Office will close. Movement about the base should be kept to a minimum. SFS will enforce "essential vehicles only" policy. (Reference Base O-Plan 32-1 "Base Disaster Operations Plan")

### **TCCOR 1 Emergency**

Actual winds of 50 knots or greater. All outside activity is prohibited.

### **TCCOR 1 Recovery**

Destructive winds of 50 knots are no longer occurring. Actual winds are 34 - 49 knots. Nonessential functions remain closed unless directed by the commander. All but emergency essential personnel remain in their quarters.

### **Storm Watch**

The typhoon is moving away but the base is still feeling some effects. Hazardous conditions may exist due to storm damage. In some cases the storm could return to Okinawa, so stay alert. All military and civilian personnel will return to work within 2 hours or at normal duty hours unless otherwise instructed by their commander. The Commissary and BX will resume operations, unless directed otherwise by the installation commander.

### **All Clear**

Hazardous conditions and winds are no longer present. Return to normal duties. All Clear is announced when all hazards have been cleared. DoDDS teachers, staff and students will return to school during normal hours. From 1 June to 30 November Okinawa will return to TCCOR 4.

# EMERGENCY POLICIES & PROCEDURES

## Tsunami

A tsunami is expected if you feel an earthquake that causes you to fall or hold on to something to keep yourself from falling; this is a natural tsunami warning. If you are outdoors remain in open areas away from tall trees poles or buildings. If you are indoors, remain indoors and take cover. In either event; when the shaking stops, immediately leave and proceed to higher ground.

### Tsunami Watch

A tsunami watch is announced by the Pacific Tsunami Warning Center (PTWC) when the magnitude and source area of an earthquake are considered significant but the center is unable to verify that a tsunami has been generated.

### Tsunami Warning

A tsunami warning is announced by the PTWC when tsunami waves have been confirmed and a threat to life and property exists. A tsunami warning means immediate action in coastal areas is required.

### Urgent Tsunami Warning

An urgent tsunami warning is announced by the PTWC when a significant earthquake occurs within or close to the Okinawa coast. The warning will be announced over the radio, through the Emergency Broadcast System in conjunction with the Okuma loud voice system. An urgent tsunami warning means urgent vertical or horizontal evacuation of evacuation zones is required.

### Okuma's Evacuation Point

The Okuma tsunami evacuation point is on top of Habu Hill which is directly across from the Okuma Security Force (building 114) on Habu Road. Habu Road is located across from the Welcome Center; in between the flag poles and the putting green of the 9th hole.



# IMPORTANT PHONE NUMBERS



When you are dialing within the Okuma Facility, please dial only the last 4 digits. When dialing from outside of Okuma, you need to dial 631-xxxx.

\*Please DO NOT unplug the phone cable

## Okuma Phone Numbers

Front Desk • 631-1990

From Cell Phone • 098-962-1990

## Emergency

Emergency • 911

(Connects to Kadena Air Base Office/Fire Department)

From Cell Phone • 098-934-5911

Okuma Law Enforcement Office • 632-3109

From Cell Phone • 090-9780-2793

Main Gate • 632-5899

## Key Facilities

Front Desk • 631-1990

From Cell Phone • 098-962-1990

Reservation Desk • 631-1991 / 631-1992

From Cell Phone • 098-962-1991 / 098-962-1992

Surfside Grill & Bar • 631-1805

From Cell Phone • 098-962-1805

Massage • 631-1990

From Cell Phone • 090-3795-8688

Outdoor Recreation Equipment Rental (South Beach) • 631-1815

Outdoor Recreation Equipment Rental (North Beach) • 631-1816

## ON BASE CALLS:

97 + 630 + Number

97 + 631 + Number

97 + 632 + Number

97 + 634 + Number

97 + 966 + Number

## OPERATOR:

KADENA

098-938-1111

KINSER, FUTEMA, FOSTER,  
TORII STATION

098-911-5111

COURTNEY, HANSEN,  
SCHWAB, WHITE BEACH

098-911-5112