

Okuma Beach Fest

Route 58 Roadside Stops

Life After Landing

VENTURE

AMERICA FEST

250 YEARS OF AMERICA: STARS, CARS AND GUITARS




18th
FSS
APR
2026

FIBER BROADBAND INTERNET

The **FASTEST** Internet on ALL Bases

GET INTERNET
AS **EASY** AS 1-2-3

- 1 Sign Up Online at MBCOkinawa.net or in-person at any on-base office.
- 2 Pick Up equipment in one of our offices or schedule a delivery right to your door.
- 3 Complete a FREE & EASY Self-Installation for immediate activation!



IT'S **EASY**
TO GET MBC
CONTACT US ORDER SERVICES

Contents

THE ROCKER CLUB 6

FOOD 10

Dough
Seaside
Tee House
Air Power Cafe
Chili's

EDUCATION & EMPLOYMENT 48

Kadena Education & Training Office
Human Resources

KADENA FSS DINING 50



FSS SPOTLIGHT 26
America Fest



OKI CULTURAL CORNER 37
Route 58: Roadside Stops

OKINAWA LIFE AFTER LANDING 18
Let's Talk About ETC.

LEISURE & RECREATION 19

Kadena ITT
Okuma Beach
Banyan Tree Golf Course
Chibana Golf Course
Emery Lanes
Kadena Library
Karing Kennels
Outdoor Recreation
Aquatics
Kadena Marina
Shogun Auto Care Center
Kadena Fitness & Sports Complex
Schilling Community Center
Arts & Crafts

FAMILY 42

Family Child Care
Teen Center
Youth Sports & Fitness
Youth Center
Military & Family Readiness Center



Find and click on Shisa throughout the online version of Venture magazine for an interactive experience: www.kadenafss.com



Facility programs, event hours and dates are subject to change.

Venture magazine is designed to inform and entertain the individuals who use Kadena FSS. For article source information, please contact 18 FSS Marketing. The opinions expressed herein are not necessarily those of Kadena Air Base, DoD or the U.S. Air Force.

For information on Venture magazine, call 18 FSS Marketing at 634-5078.

Interested in advertising or commercial sponsorship?

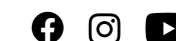
Visit www.kadenafss.com/sponsorship-advertising or email sponsorship@kadenafss.com.

月刊ベンチャーへの広告掲載の表記、嘉手納基地福利厚生施設(各種)イベントへのスポンサー支援に関するお問い合わせ先: sponsorship@kadenafss.com (日本語可)

www.kadenafss.com/sponsorship-advertising

KadenaFSS.com
#KadenaFSS
#VentureinOki

Connect with us @KadenaFSS



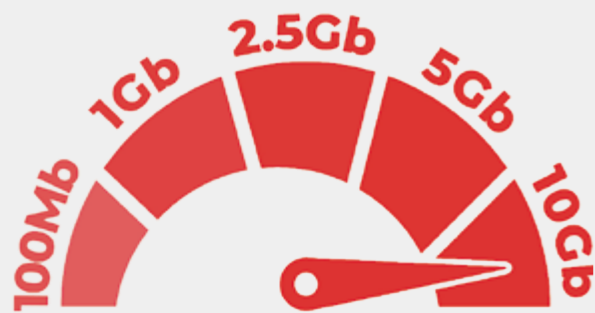
FIBER INTERNET



The Fastest Internet on Any Military Installation!

ASK US ABOUT A TWO-WEEK FREE TRIAL!

MULTI-GIG



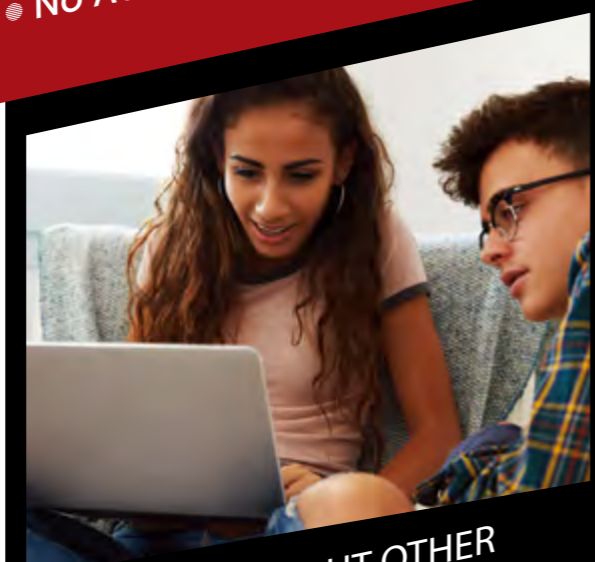
For More Information, Call Us At
03-6868-2300 or +1-415-692-8300

Paid Ad. No Federal endorsement of advertiser intended.



**DORM
WI-FI**
Plans starting at \$55.95

- FAST & EASY SIGN-UP
- Choose From Several Plans
- Unlimited Data Usage
- True Gigabit Fiber Service From Wired Port
- No Installation Fees
- No Contract Commitments
- No Additional Equipment Needed



ASK US ABOUT OTHER OPTIONS IN THE DORMS!

EDITOR'S LETTER

SAVANNA DUTCHER
Acting Marketing Director
18th Force Support Squadron



April arrives with energy, celebration and new opportunities across Okinawa.

From family festivals to competitive gaming and springtime traditions, there is something for everyone to enjoy this season.

We are proud to debut our newest feature article, **Life After Landing**. Each month, this recurring series will provide practical tips, helpful resources and insider know-how to make navigating life in Okinawa easier and more enjoyable. Whether you are newly arrived or a seasoned resident, look for expert advice on everything from local culture and travel to dining and recreation.

April is the Month of the Military Child, honoring the resilience and strength of military children around the world. Youth will be hosting activities and family-friendly events throughout the month to celebrate our youngest heroes.

Keeping with the fun, **Youth Center** has their Spring Break field trips packed with adventure, learning and fun. Activities are designed to keep students engaged while school is out.

Set sail for an unforgettable evening during the **Ryukyu Fireworks Festival and Sunset Cruise** at the Kadena Marina April 11. Guests will enjoy stunning ocean views, a vibrant Okinawan sunset and a spectacular fireworks display lighting up the night sky. Space is limited, so early reservations are encouraged.

Head north for a full day of fun at **Okuma Beach Fest** on Saturday, April 25, at Okuma Beach.

This open-gate event welcomes the community for a celebration packed with entertainment, family activities and festival favorites.

Competitive gamers, mark your calendars. **May Mayhem** takes place Saturday, May 16, at the Schilling Ballroom. The esports tournament features **Rainbow Six Siege** and **Magic: The Gathering Arena**, with more than \$3,000 in prizes on the line. Register now so you don't miss out on the action.

Beginning April 1, **Kids Bowl Free** returns to Emery Lanes. Families can take advantage of this popular program that allows children to enjoy free bowling sessions throughout the season. Contact Emery Lanes for registration details and lane availability.

Celebrate the season with **Easter** events and spring sales happening across the installation. From egg hunts to special retail promotions, there are plenty of ways to enjoy the holiday with family and friends.

Lastly, what everyone really picked up this issue of Venture for: the exciting details of America Fest 2026, featured in this month's spotlight article. We can't wait to host you, friends.

April is filled with opportunities to connect, compete and celebrate. Stay tuned for more updates, and don't forget to look for the first installment of Life After Landing as we continue helping you make the most of life in Okinawa.

Best,

COMMAND

18TH FORCE SUPPORT SQUADRON

DIRECTOR | Mr. Blaine Miller
DEPUTY DIRECTOR | Mr. Michael Wadkins

718TH FORCE SUPPORT SQUADRON

COMMANDER | Maj Dalin Chhen
DEPUTY DIRECTOR | Mr. Jonathan Boyd

MARKETING

Acting Marketing Director | Savanna Dutcher
Video Producer | Att Eachus
Photographer | Marina Chayka
Art Director | Yuka Taira
Commercial Sponsorship
Tomoko Toma | Koji Kamekawa
Supervisory Marketing Specialist | Lacey Hebert
Account Executives
Hyeyoung Walker | Lydia Rothstein | Rebecca Olson
Marianne Dawson
Marketing Coordinator | Ela Toombs
Visual Information Specialist | Diana López Hansen
Graphics
Yoshihiro Higa | Yuka Kinjo | Yasuhiro Nerome
Social Media Manager | Genesis Llanos
Web Specialist | Emily Summers



Easter Buffet

Sunday, April 5 | 9 a.m. - 4:30 p.m.

Hop into Easter at The Rocker Club! Enjoy our Easter Buffet with multiple dining sessions, delicious food and a special visit from the Easter Bunny!

- Session 1 | 9 - 10:30 a.m.
- Session 2 | 11 a.m. - 12:30 p.m.
- Session 3 | 1 - 2:30 p.m.
- Session 4 | 3 - 4:30 p.m.

Member prices
 \$25 per person, ages 13 and over
 Free for ages 12 and under

Nonmember prices
 \$35 per person, ages 13 and over
 \$15 per person, ages 5 - 12
 Free for ages 4 and under



Morning Motors Social

Saturday, April 25 | 8 - 11 a.m.
Parking lot closest to Hanabi's

Enjoy food and coffee while checking out great cars and connecting with the community. Held the last Saturday of the month.



Quarterly Membership Appreciation Night

Wednesday, April 29 | 5 - 7 p.m.
Shiraho Ballroom

Celebrate with an evening of good food, great company and prizes. Bring the whole family and enjoy a night to remember.

Family section | Ballrooms 1, 2 and 3
 Adult section | Kuba & Lounge
 Open to all club members.



This month **APR** at The Rocker Club

ROCKER LOUNGE

Weekend Live Entertainment

Fridays and Saturdays | 9 p.m. - 2 a.m.

Weekly Friday Social Hour

Fridays | 5 - 7 p.m.

Rocker Lounge

Kick off the weekend with light refreshments, hors d'oeuvres and prize drawings. Enter for a chance to win \$75, \$125 or the progressive jackpot. Open to club members and civilian equivalents ages 18 and over.

HANABI'S WEEKLY PROGRAMS

Enjoy craft beers, Asian cuisine and burgers while playing pool, darts and more, seven days a week. Open to all ranks and services.

Salsa Night

Mondays | 7 - 10 p.m.

Smartphone Trivia

Tuesdays | 7 - 10 p.m.

Free for members | \$5 per nonmember

Teams of two | minimum of eight participants

Country Line Dancing

Wednesdays | 7 - 10 p.m.

Karaoke

Thursdays | 7 - 10 p.m.

Entertainment

Fridays and Saturdays | 9 p.m. - 2 a.m.

KAZOKU PLACE

Members-Only Two-for-One Entrée Special

Tuesdays | 4 - 9 p.m.

Entrée options include:

- Pork saltimbocca
- Beef stroganoff
- Mahi mahi in lemon garlic cream sauce
- Marry Me chicken

Each entrée includes a choice of house salad or cup of soup, two sides and fresh bread unless otherwise noted. *Dine-in only. Not available for to-go or pickup.*

KAZOKU PLACE (continued)

Drive-By Dinners

Thursdays | 4:30 - 6:30 p.m.

\$12 per person | 10% member discount

April 2 | Korean beef with steamed rice and cucumber kimchi

April 9 | Pork adobo with steamed rice and lumpia

April 16 | Roast beef with gravy, mashed potatoes and green beans

April 23 | Yakisoba

April 30 | Chimichanga with refried beans and Mexican rice

Pull up to the curb at the The Rocker Club entrance on Hanabi's side, and a staff member will assist you. *Limited quantities available.*

Mongolian BBQ Night

Thursdays | 4 - 9 p.m.

Build your own stir-fry meal with fresh ingredients.

Please note Kazoku Place will serve Mongolian BBQ only.

The regular menu will not be offered.

Sunday Brunch Themes

Sundays | 9 a.m. - 2 p.m.

April 5 | All-American BBQ

April 12 | Italian

April 19 | Mexican

April 26 | Southern picnic

Kids Night Special

Wednesdays | 4 - 9 p.m.

50% off | ages 5 - 12

Free | ages 4 and under

Bring the whole family. Children ages 12 and under enjoy special pricing with any adult entrée. *Dine-in only.*

Retiree Club Member Appreciation

Friday, April 24 | 6 a.m. - 2 p.m.

Retirees receive an additional \$1 discount with the purchase of a full breakfast or lunch entrée. *Must show retired military ID and an active club member card.*

18 FSS WANTS YOU TO ARRIVE ALIVE!

YOU HAVE OPTIONS ...

Free taxi from FSS clubs & restaurants!



Daiko | 098 932 4035

ZERO Excuses Riders of Okinawa | +81 98 961 2233

Panda taxi | 098 970 8888

Only a silly Shisa would get a DUI with this many safe rides home!

ORDERING IN?

Kazoku Place has you covered

Order online using the Oki Grubs app then pick up your order at The Rocker Club!



www.kadenafss.com/oki-grubs-app



The Rocker Club

966-7372 | 036-868-2207

Bldg 622 therockerkadena

FOOD

WE'RE ROLLING OUT SOMETHING NEW THIS SPRING!

DOUGH PIZZERIA



We are saying Goodbye to **Banyan Tree Pizza & Grill**. We proudly introduce the new Dough Pizzeria — **YOUR STYLE, YOUR FLAVOR, YOUR DOUGH!**

DOUGH
PIZZERIA
EST. 2025

We celebrate the art of pizza by giving you the freedom to enjoy it your way. Whether you crave the airy chew of a Neapolitan, the crisp bite of a Roman, the foldable comfort of a New York slice or a classic crowd-pleaser, we handcraft each pizza style with the same dedication to excellence.

966-7426 | 036-868-2212
Bldg. 455

DELIVERY ONLY via Oki Grubs while we complete our renovations.

Seaside

RESTAURANT

AT KADENA MARINA



Great food, great staff and a great view!
Located at the Kadena Marina, Seaside serves a delicious and affordable surf and turf style menu right on the waters of the East China Sea.



SEASIDE RESTAURANT
966-7401 | 036-868-2213
Bldg. 3629A

Above Par in Every Way

Perched atop the Banyan Tree Golf Course, this hilltop dining spot pairs sweeping views with a relaxed, welcoming atmosphere. It's the perfect place to unwind after a round, catch up with friends or simply enjoy an easy bite without ever picking up a club. Come for the scenery, stay for the good times!



TEE HOUSE
966-7429 | 036-868-2214

YouTube
@KadenaFSSTV

Don't miss a beat—subscribe to **KadenaFSS TV** on YouTube and catch all the action, from base events, Kadena Eats to Okinawa Cultural Corner and more!


For You





Your Smile, Our Pleasure.
RYCOM DENTAL CLINIC

- Cleaning, Exam
- Cavity treatment
- Cosmetic dentistry
- Invisalign® and more

 English-Speaking Service Available

Phone: 080-4149-0711

dentalrycom@gmail.com

Mon, Tue, Fri & Sat • 10 a.m. - 1 p.m.
 3:30 - 7 p.m.

Wed, Thu & Sun • Closed

WEBSITE:

MAP:



Inside AEON MALL
 Okinawa Rycom, 2nd Floor



TRICARE is a registered trademark of the
 Department of Defense, Defense Health Agency.
 All rights reserved.

Paid Ad. No federal endorsement of advertiser intended.



FOOD

**AIR POWER CAFE
 NOW OPEN**

Cafe | Mon - Fri • 5:30 a.m. - 1:30 p.m.
 Dining Area | Open 24/7

Coffee & Grab-and-go options
 Bring your own food or grab something quick and take a
 load off in our revamped dining area!

Finally, a cafe that gets it — bring your meal prep, keep
 your gains. Self-serve microwaves available.

Air Power Cafe is a cashless facility.

AIR POWER CAFE
 Bldg. 3522 | 966-7405 | 036-868-2208



MEGA SPORTS

LIMITED TIME OFFER

OFF ROAD CARGO 8045

¥7,480
 (¥8,228 with Tax)



mont-bell
 Outdoor Gear & Clothing

Gear up for outdoor adventures!

Okinawa Rycom Store | AEON MALL Okinawa Rycom 2nd Floor, 1 Rycom, Kitanakagusuku-son, Nakagami-gun

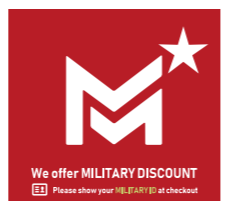
AEON MALL Okinawa Rycom is one of the largest shopping malls on Okinawa. We have one major grocery and lifestyle store and more than 220 specialty stores plus a cinema and food court restaurants.

AEON MALL
 AEON MALL Okinawa Rycom

AEON MALL Specialty Stores 10:00~22:00 | Food Court 10:00~22:00 | Restaurant Area 11:00~23:00 | Grocery (AEON STYLE) 8:00~23:00



Paid Ad. No Federal endorsement of advertiser intended.



We offer **MILITARY DISCOUNT**
 Please show your MILITARY ID at checkout



60+ stores offer military discounts. Check our stores out now.
 *Subject to change without notice. *Cannot be combined with any other promotion offer.

KADENA EXCHANGE

APRIL IS THE

MONTH

OF THE

MILITARY CHILD

JOIN US THIS APRIL FOR IN-STORE EVENTS, GIVEAWAYS AND SALES

@shopmyexchange
 #monthofthemilitarychild



PAID AD

NEW!

THE BIG Q/P

BIGGER THAN A
QUARTER POUND BURGER!



TEQUILA TRIFECTA

\$6



Three tequilas. One legendary marg. April calls for triple the pour. Meet the Tequila Trifecta Margarita – bold, smooth and citrusy, featuring 1800 Reposado, El Jimador Silver and Jose Cuervo Especial. Because one tequila was never enough.



Call to place your order
DSN 966-7360 or
036-868-2209 | Bldg. 337



Delivery • 11 a.m. - 10 p.m.
Kadenafss.com/delivery
DSN 966-7366 or 036-868-2210



Chili's Grill & Bar
DSN 966-7359 or
010-1512-672-7359 | Bldg. 105

Drink Responsibly.
Drive Responsibly.

UNION SOKARA

コザポニー店

UNION SOKARA KOZABO STORE GRAND OPENING !!

UNBEATABLE ON FRESHNESS, PRICE, AND SELECTION. A SUPERMARKET WITH PASSION.



OUR SELECTED BEEF:
HAND-SELECTED BY EXPERTS FOR UNRIVALED QUALITY. ENJOY THE RICH UMAMI FLAVOR AND MELT-IN-YOUR-MOUTH TENDERNESS.



SUSHI ROLL:
FRESH CATCH, BIG ROLLS!
CHEF-CUT FOR PEAK FRESHNESS, IDEAL FOR SUSHI.

Farm-Fresh!!
Fruits & vegetables

PIN PON BREAD
OVEN-FRESH!
WE BAKE EVERY MORNING!
AROUND 60 SAVORY & SWEET BREADS.



UNDER \$1.00*

PINPON BREAD UNDER \$1!
(APPROX. ¥139, FEB '26 RATE)

PASSIONATE SOURCING. FROM OKINAWA TO ALL OF JAPAN AND AROUND THE WORLD - AT INCREDIBLE VALUE.



OPEN FROM
9:00 AM TO 11:00 PM
YEN ONLY. NO CREDIT OR DEBIT CARDS ACCEPTED.
U.S. BILLS ACCEPTED UP TO \$20 ONLY.

Pizza Pizza Pizza!!

12-inch under \$5!!*
Yes, really.

THE "CURRY" LIBRARY: A FLAVOR JOURNEY ACROSS JAPAN.

Discover unique Japanese food and goods, found only here.

PIZZA: UNDER \$5 USD! (EQUIVALENT TO 699 JPY + TAX, FEB '26 RATE)

DAISO 100 YEN SHOP

Our In-House Designs!

OKINAWAN CULTURE Karate
UNION SOKARA KARRY
RYUKYU FIGHTING BULL
HAI-SAI DESUKARA
ENJOY FRESH PLAZA

DAISO
UNION SOKARA
RYUKYU FIGHTING BULL
HAI-SAI DESUKARA
ENJOY FRESH PLAZA

*Paid Ad. No Federal endorsement of advertiser intended.

Life After Landing

Okinawa Edition



Photography & Article: **Marina Chayka**

Let's talk about ETC.

At some point, you will end up on the Expressway. Maybe it's a festival across the island or one of those Costco runs. It happens. For an embarrassingly long time, I avoided setting up ETC after a few failed attempts. Eventually, though, you grow tired of stopping to pay the toll every single time and paying the higher non ETC rate.

Getting started is simple. Visit an auto shop such as Autobacs or Yellow Hat. Staff will check whether your vehicle has an ETC reader installed and register it to you. If you do not have one, you can purchase and install it there.

Once the device is registered, the next step is setting up an account with the recommended ETC card provider and linking your payment information. After processing, which usually takes

several days, your ETC card will arrive by mail. Insert the card into the reader, and you are officially part of the seamless-lane club. Charges are billed monthly based on usage.

There are setup and service costs, so ETC makes the most sense for frequent expressway drivers. If you use it regularly, the time saved and discounted toll rates add up quickly.

Future you, cruising past toll booths without fumbling for yen, will be grateful.

Ready to hit the road?

Visit the **Schilling Community Center** and they'll have you ready to take on the expressway in no time with their **Driver's Education** program.

Do you have an **Okinawa-related question or pro tip** you want to share?



LifeAfterLanding@kadenafss.com

LEISURE & RECREATION

Lily Festival on Ie Island

April 25 - 26 and May 2 - 3

\$48 | ages 12 and over

\$35 | ages 6 - 11

\$6 | ages 5 and under

Let Kadena ITT take you to the annual Lily Festival on Ie Island. This day trip includes transportation, a tour of Ie Island and free time to enjoy the festival.

Itinerary

7:15 a.m. | Depart for Motobu Port

9:30 a.m. | Arrive on Ie Island

9:40 a.m. | Visit the Ernie Pyle Monument

9:50 a.m. | Explore the Cave of Niya Thiya

10:30 a.m. | Experience Wajee Point

11 a.m. | Hike Mount Gusuku (optional)

Noon | Enjoy the Lily Festival

3 p.m. | Depart for Kadena ITT

5 p.m. | Arrive at Kadena ITT

Overnights

YYY

April 17 - 19

Bali

June 15 - 20

Tokyo

July 3 - 6



Stage Lineup | 3:30 - 9 p.m.



DIG IT! DIG IT! ONE



E'sekai



Neil



B.Rox



B.B. Waves



Shuto (Rapper)



Shion (Japanese Taiko Drums)



OZworld (Rapper)



Rinken Band (Okinawa Pops)

OKUMA BEACH FEST

2026

Saturday, April 25

Open Gate | noon - 10 p.m.

Live Music, Dance Performances

Kiddie Land | noon - 8 p.m.

Go Karts | noon - 7 p.m.

Food and Game Vendors | noon - 9 p.m.

Event information is subject to change without notice.

Bags are subject to a search upon entry. Visitors ages 18 and older must show identification to enter. Children under the age of 18 must be escorted by guardian and may be asked for an ID to verify their age.

NO GLASS BOTTLES, PETS OR FIREWORKS.



Sponsored in part by:



No federal endorsement of sponsors intended.



OKUMA BEACH

Okuma Beach | 631-1991

Lodging Reservations | 098-962-1991

Surfside Grill & Bar | 098-962-1805

Okuma Outdoor Recreation | 631-1815

Massage Reservations | 090-6856-8276

Easter Egg Hunt

Sunday, April 5

Open Gate | 8 am - Noon

Sign up | 8:30 a.m.

Free | Ages 15 and under

Hop on over to our annual Easter egg hunt. Kids can search for colorful eggs and may find prizes inside during this family friendly celebration.

Camping with Pets

April 3 - 5

\$10 | Per camp spot

Pet-friendly camping at Hillside Campground and access to West Beach available! Sign up at Outdoor Recreation Equipment Rental, bldg. 121. Spaces are limited and will be allocated on a first-come, first-served basis. Restrictions may apply.

***Pets must be properly immunized, and proof of vaccination records are required.*

H O M E & H O M E



Individual Stroke Play Saturday and Sunday, May 16 - 17

Shotgun start | 7:30 a.m.
Registration deadline | Monday, May 11
\$130 tournament fee, plus green and cart fees.

It's a two-day, team-based showdown! Pick your side and tee it up for either Team Banyan Tree or Team Taiyo as bragging rights are on the line in this Home & Home battle. Two days. Two teams. One winner.



BANYAN TREE
GOLF COURSE
966-7321 | Bldg. 12

CHIBANA GOLF COURSE

966-7327 | Bldg 55061

Mini Masters Stroke Play

Wednesday, April 8
Shotgun start | 5 p.m.
\$20 per player | Nine holes | Individual stroke play
Anyone can win! This gross and net event uses Peoria-system scoring to give every golfer a fair shot at the top of the leaderboard. Secure your spot by April 6!

Three-Club, Two-Person Scramble

Saturday, April 18
Showtime | 12:30 p.m.
Shotgun start | 1 p.m.
\$60 per team | 18 holes
Think you can master the course with only three clubs? Join this unique two-person scramble as players test their skills with limited gear—no sharing allowed. With only 36 spots available, act fast to compete for team prizes and closest-to-the-pin awards.



EMERY LANES

966-7303 | Bldg 113

Kids Bowl Free at Emery Lanes



Starts April 1
Monday - Friday | 10 a.m. - 5 p.m.
Kids 18 and younger receive two free games (shoe rental not included).
Register now at kidsbowlfree.com/AirForce and choose Emery Lanes as your home alley.
Fun, active and social — perfect for kids this summer.

Parties That Strike Every Time

Birthday parties and events made easy.
Multiple packages available.
Echo Room | Karaoke Lounge
Galaxy Suite | Premium Event Space





Looking to expand your language skills? The library offers a dedicated language section with materials available in Japanese.

Prefer to learn on the go? Check out **Mango Languages**, an online language-learning platform offering more than 70 languages. Mango Languages focuses on six critical skills for learning a new language: vocabulary, grammar, pronunciation, culture, comprehension and retention.

Mango Languages is available through the Department of Defense MWR Libraries website and can be accessed from your web browser or by downloading the mobile app.

Visit www.dodmwrlibraries.org to get started.

How to access Mango Languages on the mobile app:
Visit the Mango Languages website through your internet browser.
Click the mobile icon near the top right corner of the page to find login credentials.
Enter the provided credentials into the Mango Languages app.

KADENA LIBRARY

Bldg 451 | 634-1502

Library Hours

Mon - Tue | 10 a.m. - 6 p.m.
Wed | 10 a.m. - 8 p.m.
Thur - Sat | 10 a.m. - 6 p.m.
Sunday and Holidays | Closed

- Support my family
- Build my skills
- Earn my degree
- Create my own path

Succeed Again.



ASIA.UMGC.EDU

Attend a no-cost webinar and find your next success at UMG Asia. Register to attend at asia.umgc.edu/webinars or scan the QR code below. If you apply for admission within 30 days of attending an Intro to UMG Asia or Graduate Programs webinar, your \$50 app fee will be waived!



Paid advertisement. No federal endorsement of advertiser intended. Copyright © 2025 University of Maryland Global Campus.

Support your dog when they need it most!



NOW AVAILABLE

Whether it's an upset stomach, low appetite, stress from travel or change, Under the Weather offers vet-formulated solutions to help your dog bounce back fast.

Now available at Karing Kennels.
Ask our team which option is right for your dog.

Bland Diet Meal Packs

- Gentle on sensitive stomachs
- Ready in minutes, just add water
- Long shelf life, perfect to keep on hand

High Calorie Powder

- Supports healthy weight gain
- Easy to mix with food or water
- Packed with essential vitamins and nutrients

Anti-Diarrhea Liquid

- Fast, gentle relief for digestive upset.
- Helps firm stools and soothe discomfort.

KARING KENNELS

Boarding Facility
036-868-2235 | 966-7339
Monday - Saturday | 10 a.m. - 6 p.m.

AMERICA FEST

KADENA AIR BASE

By Savanna Dutcher

Every spring, Kadena Air Base opens its gates to welcome the Okinawa community for one of the year's most highly anticipated celebrations — America Fest. Taking place Saturday and Sunday, April 11-12.

This year, the celebration takes on even greater meaning as the United States marks 250 years of independence. The theme, "Stars, Cars and Guitars," highlights the milestone with a weekend packed with aircraft displays, live entertainment, food, a car show with a drifting track and family-friendly activities.

What began years ago as an effort to bring the American and Okinawan communities together has grown into a massive two-day celebration. About 70,000 visitors are expected to attend the flight line open house, making it one of Kadena's largest community events.



AVIATION UP CLOSE

One of the biggest draws of America Fest is the chance to get up close to some of the Air Force's most iconic aircraft. Guests can walk along the flight line and see aircraft such as the F-15C Eagle, F-16C Fighting Falcon and F-35A Lightning II, as well as larger support aircraft including the HH-60W Jolly Green II and MC-130J Commando II. For aviation enthusiasts and curious visitors alike, it's a rare opportunity to see these powerful machines outside the fence line and up close.

FUN FOR THE WHOLE FAMILY

America Fest isn't just about airplanes — it's designed for visitors of all ages.

Guests can explore the STEM hangar, where interactive exhibits introduce kids to science, technology, engineering and math through hands-on activities. Virtual reality simulations and demonstrations of military technology offer a glimpse into the innovations shaping the future.

The Kiddie Land area features rides and attractions including a mini jet ride, swing ride, the FSS train and Crazy Karts. Around the festival grounds, families will also find go-karting, a basketball activity area and an Esports gaming setup on a mega multiplayer screen.



A FESTIVAL OF FLAVOR

It's no secret Americans love to eat, and no festival would be complete without great food. America Fest delivers plenty of options. Visitors can choose from 34 food trucks and 23 food tents offering a wide range of festival favorites. Guests can grab quick bites like walking tacos, explore international flavors or relax in the beer tent. And for those looking for a refreshing treat, the popular Chili's margarita tent will once again be serving its well-known festival drinks.

SHOP AND EXPLORE

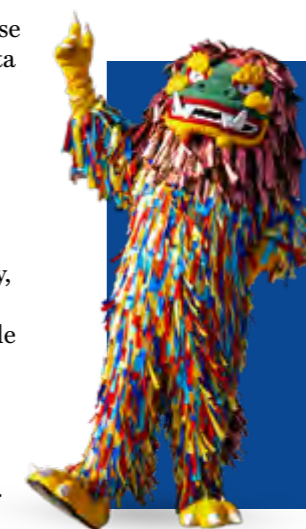
Beyond food and rides, guests can browse dozens of vendors selling official America Fest merchandise, jewelry, clothing and handmade goods, just to name a few. It's a perfect chance to pick up souvenirs and unique finds while supporting local businesses.

LIVE ENTERTAINMENT

Music will keep the energy high throughout the weekend. This year's entertainment lineup features tribute performances celebrating the music of country legends Garth Brooks and Shania Twain, along with a tribute to the King of Pop, Michael Jackson. Several local performers will also take the stage, adding to the festival atmosphere throughout the day.

A NIGHT TO REMEMBER

Saturday night will end with one of the most anticipated moments of the weekend. At 7:18 p.m., the skies above Kadena will light up with a dazzling fireworks display, providing a spectacular finale to the first day of festivities.



KNOW BEFORE YOU GO

To ensure a safe and enjoyable event for everyone, some items are not permitted inside the festival grounds. Prohibited items include alcohol, firearms or air guns, drones, fireworks, coolers, outside food or beverages, large camera lenses (300mm or longer), tents, portable chairs and animals other than service dogs. Visitors are encouraged to travel light to avoid delays at the security checkpoint.

America Fest 2026 promises a weekend of aviation, music, food, cars and community — a celebration of friendship between the United States and Okinawa and a fitting tribute to America's 250th anniversary.



Hiking, Park Golf and Camping at Okuma

April 18 - 19

\$75 per person
\$25 per additional guest
\$10 for ages 11 and under

Day 1: Park golf
Day 2: Cycling along the beautiful seaside

ODR will make camping reservations and show participants how to set up their campsite. The price includes a trip guide, bicycle, helmet, camping site at Okuma and camping gear, including one tent per family and a sleeping bag and sleeping cot for each adult. Bring cash (yen) for snacks, additional meals and purchases.

ATV (Buggy)

Saturday, April 4
\$70 | ages 16 and over
\$65 | ages 11 - 15
\$10 | ages 4 - 10
Ages 4 -10 must ride with parent.

Hiking Club

9 a.m. - 2 p.m. | ages 6 and over
Friday, April 10 — Jawbone
Friday, April 24 — Mount Motobu Fuji
\$40 for two hikes
\$25 per hike

OUTDOOR RECREATION

966-7343 | 036-868-2229 | Bldg. 614
We offer rental equipment from bounce houses to bicycles and camping gear too!
We can also host your next Archery Tag Party!
Facebook and Instagram icons @KadenaOutdoorRecreation

Mount Katsuu Hiking

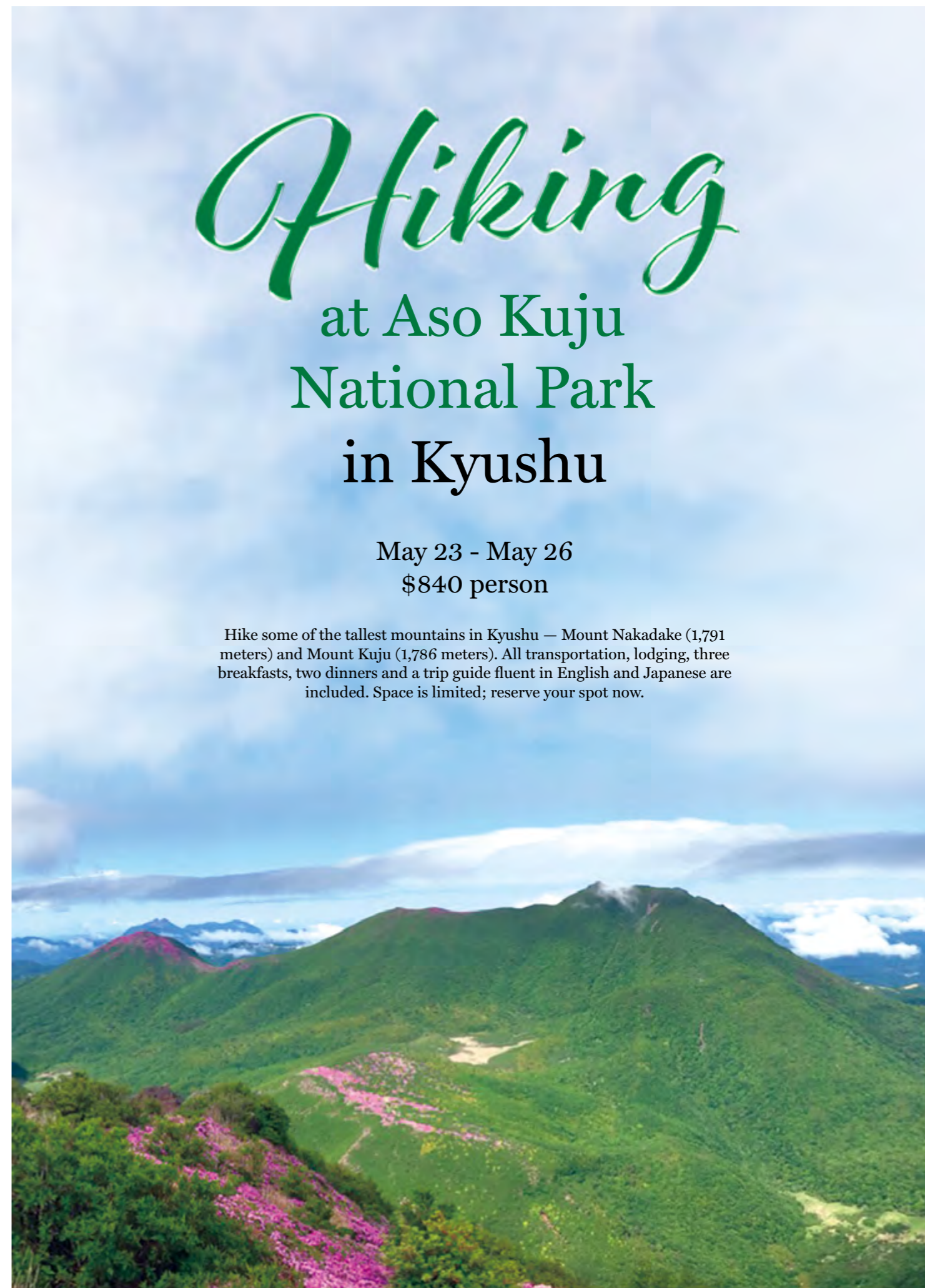
Thursday, April 30 | 8 a.m. - 1 p.m.
\$30 per person

ARCHERY INFORMATION

Intro to Archery
Saturday, April 25 | 3 - 4 p.m.

Archery Practice

Saturdays | 4 - 6 p.m.
Weather permitting. Please check the ODR Facebook page for updates.



Hiking at Aso Kuju National Park in Kyushu

May 23 - May 26
\$840 person

Hike some of the tallest mountains in Kyushu — Mount Nakadake (1,791 meters) and Mount Kuju (1,786 meters). All transportation, lodging, three breakfasts, two dinners and a trip guide fluent in English and Japanese are included. Space is limited; reserve your spot now.



KADENA AQUATICS

634-7665
Fairchild Pool | Bldg. 1988
Facebook Instagram @KadenaAquatics

Swim tests available at Fairchild Pool

Get your swim tests completed before summer at Fairchild Pool and skip the line. Swim tests are valid through the calendar year at either Kadena aquatics facility.

Fairchild Pool | Lap Swim

Monday - Friday | 5 a.m. - 8 p.m.
Saturday - Sunday | 8 a.m. - 1 p.m.
Fairchild Pool is closed the first Wednesday of every month for training.

For information on lane availability, follow us on Facebook for the most recent updates.

Hagerstrom Pool | Recreation

Closed for the season; reopening soon.



KADENA MARINA

Dive Shop | 036-868-2228
Bldg. 3500
Facebook @KadenaFSSMarina

Dive Season

Starts Saturday, April 4
Registration begins | March 6
Saturdays and Sundays | 8 a.m. - 3 p.m.
Ages 8 and over
Book your adventure today at Kadena Marina.

Sunset Paddle at Kadena Marina

Friday, April 17 | 6 p.m. | ages 10 and over
SUP or kayak options available.

Ryukyu Fireworks Festival and Sunset Cruise

Saturday, April 11 | 6 p.m.
Ages 20 and over | Kadena Marina
Cruise aboard The Venture to American Village to experience sunset and one of the largest fireworks celebrations Okinawa has to offer.

Discover Snorkel

Saturday, April 25 | ages 6 and over
Have questions about proper snorkel techniques? We're here to help. Join us at Kadena Marina Harbor to learn the basics of snorkeling. Preregistration is required.



SHOGUN AUTO CARE CENTER

Bldg 1436
 Repair Center
 966-7356 | 036-868-2232
 Mon - Fri, 8 a.m. - 5 p.m.

U-Wrench-It & Parts Store
 966-7355 | 036 - 868 -2221
 Mon - Fri, 8 a.m. - 6 p.m.
 Sat, 8 a.m. - 6 p.m. | Sun, 10 a.m. - 6 p.m.
 Holidays, 8 a.m. - 5 p.m.

Check Your Tire Pressure

Low tire pressure can hurt your gas mileage. When tires are underinflated, they create drag, which makes your engine work harder. Check the recommended pressure on the side of your tire and fill to that level.

We Sell Tires

Need new tires? We keep a variety in stock. If we don't have your size, we can usually order it. Most special orders arrive in 3 to 5 days.

Retail Store and Auto Parts

Stop by our retail store and browse our selection of car related items. If you need repair parts for your vehicle we can help with that too. Please bring your title so we can gather the correct information and make sure you get the right part.

KADENA FITNESS & SPORTS COMPLEX

Habu Fitness Center | Bldg. 449
 634-3866 | Open 24/7
 Manned hours | 5 a.m. - 2 p.m.

Risner Fitness Center | Bldg. 109
 634-5128 | Open 24/7
 Manned hours | 5 a.m. - 10 p.m.

RisN' Shine
 Mon - Fri | 7 a.m. - 8 p.m.
 Sat and Sun | 7 a.m. - 3 p.m.

Massage Therapy
 Kadena | 634-5128
 Daily | 7:30 a.m. - 7:30 p.m.

Kadena Sports Pro Shop
 Bldg. 109 | 966-7431 | 036-868-2230
 Mon - Fri | 8 a.m. - 7 p.m.
 Sat and Sun | 7 a.m. - 3 p.m.

Pro Shop

April 17 - 18
 20% off all Kadena Fitness and Sports design items (excluding apparel)

Functional Fitness Class

Monday - Friday | 5 - 6 a.m., 6 - 7 a.m. and 5:30 - 6:30 p.m.
 Saturday | 7:30 - 8:30 a.m.
 \$30 | one-time fee

Saturday, April 11 | Functional Fitness Fundamentals class
 Risner Fitness Center
 Pay the one-time fee and attend the three-hour Functional Fitness Fundamentals class prior to joining group classes. Functional fitness features varied, high-intensity movements with a focus on safety, efficiency, and effectiveness to increase work capacity in and out of the gym. Stop by the Risner Fitness Center front desk or call for more information.

Above All Bootcamp

April 6 - 29 (nine sessions)
 Mondays, Wednesdays and Fridays | 5 - 6 a.m.
 April 7 - 29 (nine sessions)
 Tuesdays, Wednesdays and Fridays | 9:30 - 10:30 a.m. and 3:30 - 4:30 p.m.

Slaughter Me Fit Camp with Adry Slaughter

April 6 - 24
 Monday, Wednesday and Friday | 7:30 and 10 a.m.
 Tuesday and Wednesday | 5 a.m. and noon
 \$25 | per session
 \$180 | two sessions per week
 \$250 | three sessions per week
 This class is designed to help participants build muscle and gain strength through targeted weight-training workouts.



Personal Training

Our trainers are certified in NASM, ISSA and ACE. They assist with weight loss, strength training, cardiovascular conditioning, nutrition support and muscular development. Contact the Risner Fitness Center front desk for more information.
 Individual training | \$50 per session
 Small group training (2 - 10) | \$35 per session

Brazilian Jiu-Jitsu

Monday - Thursday | 6:30 - 9 p.m. (gi)
 Friday | 6:30 - 9 p.m. (no gi)
 Saturday | 9:30 a.m. - noon (sparring)
 \$100 | per month
 \$50 | two weeks
 \$20 | individual classes
 Open to all active-duty service members, DoD employees and family members ages 18 and over.

Karate Classes

\$70 | per month
 This class teaches an effective system of self-defense based on dragon, tiger and crane movements. It is known for powerful body conditioning and explosive striking techniques. Contact the Risner Fitness Center front desk for more information.

Massage Therapy

Treat yourself to relaxation. The Risner Fitness Center offers massage therapy in various styles to help you unwind and recover from daily stress.
 \$40 | 30 minutes \$55 | 60 minutes
 \$70 | 75 minutes \$85 | 90 minutes
 \$100 | 120 minutes
 Book your session at the Risner Fitness Center front desk. Payment is required at the time of booking.

KADENA FITNESS & SPORTS COMPLEX

HABU HASHIRE 5K

Saturday, April 4 | 8 a.m.
Sign-up | 7:15 a.m.
Habu Trail



2025 Habu Hashire 5K Winners

Join us for our first 5K of the year. Sign-in begins at 7:15 a.m. Open to all DoD ID cardholders. No registration required.



2026 FAMILY BINGO!

Wednesday, April 15
5 - 7 p.m.

Games begin | 6 p.m.
Schilling Ballroom
Theme | LEGO

Level up game night with Team Schilling at this month's LEGO - themed family bingo.

\$10 per player | expert level (eligible for adult prize)
\$5 per player | beginner level (eligible for child prize)

Registration opens via WebTrac on April 1 at 10 a.m.
Pre-registered individuals may purchase additional cards on the day of the program.




Ballroom and Salsa Dance Lessons

Thursdays | 5:45 - 6:45 p.m.
Schilling Community Center
\$60 for four lessons

Step into the rhythm with our Ballroom and Salsa Dance Lessons! Whether you're a beginner or want to brush up your skills, this is your chance to learn! To register, stop by the Schilling Community Center.

RISN' SHINE MONTHLY SPECIAL

Island Breeze



Pineapple juice (97.5 cal.)
Pineapple (7.2 cal.)
Coconut (168 cal.)
Whipped cream (30 cal.)
Total: 312.7 cal.

MAY MAYHEM 2026

SATURDAY, MAY 16 | 10 A.M. - 6 P.M.
SCHILLING BALLROOM

ESPORTS TOURNAMENT

RAINBOW SIX SIEGE AND MAGIC: THE GATHERING

REGISTRATION | FEB. 20 - APR. 30
FIRST SERVED AT KADENAFSS.COM/ESPORTS
PRELIMS (VIRTUAL) | MAY 9 | 10 A.M. - 6 P.M.
MTG AT DECKS AND DICE

\$3,000+ IN PRIZES
GRAND FINALE AND AWARD CEREMONY | MAY 16

R6 | 24 TEAMS MAX (120 PLAYERS)
MTG | 30 PLAYERS MAX

Eligibility | U.S. military active-duty personnel, DoD civilians, veterans, retirees and dependents 13 and over assigned to Okinawa military installations

Sponsored in part by:  



SCHILLING COMMUNITY CENTER

634-1387 | Bldg. 455

  @KadenaCommunityCenter



CLASSES

Driver's Education

\$300 | class fee
For first-time adult drivers, teens and active duty members. The class fee includes classroom instruction and six hours of behind-the-wheel training with experienced instructors. Day and evening classes are available for teens and first-time adult drivers.

Guitar Lessons

Monday - Friday
\$70 per month | 30-minute sessions | includes 4 sessions
Contact Schilling Community Center for scheduling.

Japanese Conversation Classes

Mondays or Wednesdays | 5 - 6:30 p.m.
\$40 registration fee | includes four classes

STEM Science

Thursdays | 4 - 5 p.m.
\$40 per month
Registration required.
1st and 3rd Thursday | ages 6 - 9
2nd and 4th Thursday | ages 10 - 12

KUMON (Math / Japanese)

Tuesdays and Fridays | 3 - 6 p.m.
1st and 3rd Thursdays | 3 - 6 p.m.
30-minute sessions
\$75 per month for 1 subject
\$150 per month for both subjects
Math | ages 5 - 18
Japanese | ages 5 and over
Registration required.



Discover Your *Next Creative Skill* at Arts & Crafts

Wooden Kokeshi Doll Painting

Saturday, April 4 | 3:30 – 5:30 p.m.

Intermediate-Level Shisa Painting

Sunday, April 5 | 10 a.m. – noon

Fee: \$45

Sanshin Making and Playing

Saturday, April 25 | 12:30 – 2:30 p.m.

Fee: \$85

Spring Bouquet Cookie Decorating

Saturday, April 25 | 2 – 5 p.m.

Fee: \$60

3D Printing

Saturdays, April 4, 18 and 25 and May 2 | 11 a.m. – noon

Fee: \$80

Digital Art

Saturdays, April 4, 18 and 25 and May 2 | 10 – 11 a.m.

Fee: \$80



Bingata Tapestry

Saturday, April 25 | 10 a.m. – noon

Fee: \$55

Meditation and Painting

Wednesday, April 15 | 10 a.m. – noon

Fee: \$25

Photography and Photoshop

Monday and Wednesday, April 6 and 8 | 6 – 7 p.m.

Fee: \$40

Resin Art: Sakura Welcome Sign

Saturday, April 25 | 10 a.m. – noon

Fee: \$60

Small Project Painting

Mondays, April 6 and 20 | 5 – 7 p.m.

Fee: \$20

Acrylic Painting

Mondays, April 13 and 27 | 5 – 7 p.m.

Fee: \$40

KADENA ARTS & CRAFTS

Bldg. 455 | 036 - 868-2216

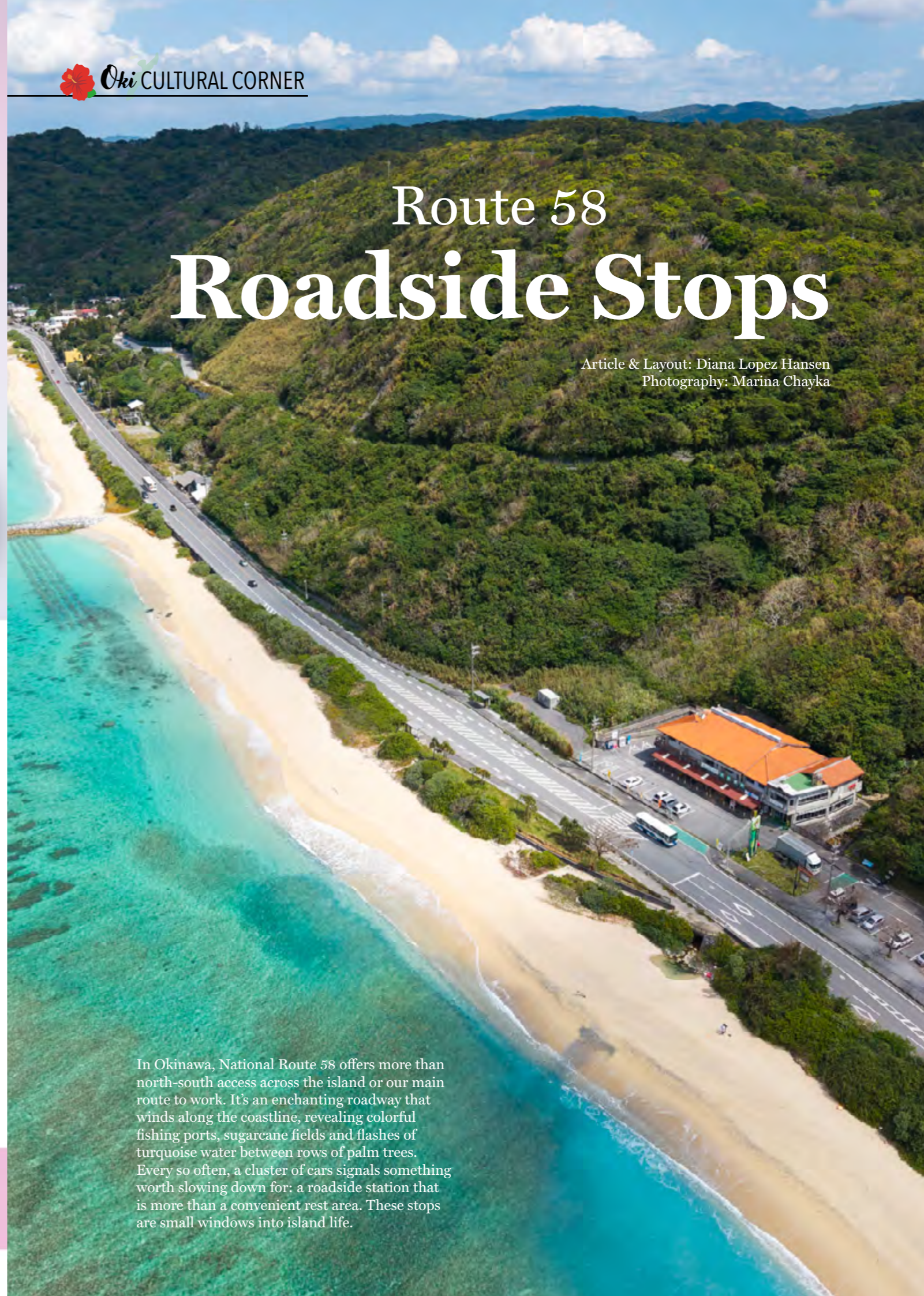
Mon - Sat | 9 a.m. - 5 p.m.

Sun, Holidays, Readiness Days | Closed

Route 58 Roadside Stops

Article & Layout: Diana Lopez Hansen

Photography: Marina Chayka



In Okinawa, National Route 58 offers more than north-south access across the island or our main route to work. It's an enchanting roadway that winds along the coastline, revealing colorful fishing ports, sugarcane fields and flashes of turquoise water between rows of palm trees. Every so often, a cluster of cars signals something worth slowing down for: a roadside station that is more than a convenient rest area. These stops are small windows into island life.





For travelers, they offer a practical break from driving and a direct introduction to Okinawan food and culture, a welcome alternative to the routine stop at a convenience store, or konbini. For residents, many of these stations double as weekly markets where locals shop for produce and regional specialties in convenient roadside locations. We explored several of these stops on a drive north to Okuma and discovered just how much they offer.

Many of these stops are part of Japan's official Michi no Eki roadside station system, established in the early 1990s to improve road safety and promote regional economies. Located along public highways rather than toll expressways, each station provides free parking, 24-hour restrooms and tourism information. Those basics are paired with stalls selling seasonal produce, prepared foods and locally made crafts.



Driving north from Kadena, Onna no Eki Nakayuki Market sits directly along Route 58 and is known for its lively food counters. Vendors sell sata andagi, taco rice and shaved ice topped with tropical fruit, creating a bustling market atmosphere that draws beachgoers and road trippers alike. Inside, visitors will find a wide selection of local produce, plants and souvenirs. Smaller stalls typically accept cash only, while larger shops take credit cards. Across the street lies a quiet stretch of beach, and behind the market is an open grassy area perfect for stretching your legs, letting kids run around or enjoying a snack with a view. If time allows, a nearby cultural center and museum are within walking distance.



Farther north near Nago, Michi no Eki Kyoda, also known as the Yambaru Bussan Center, serves as a gateway to the island's forested Yanbaru region. The station stocks produce and specialty foods from the surrounding area, while its food counters offer a wide variety of local dishes. A tourism desk provides maps, event information and discounted tickets for attractions throughout northern Okinawa. One highlight is the expansive observation deck extending over Route 58, offering a unique vantage point for photos and people-watching. Inside, visitors can also learn more about the history of the highway before taking a moment to rest.





For a quieter stop, continue to Ogimi, where another roadside station offers a slower pace. A small waterfall flows behind the property, and a café serves coffee brewed from beans grown locally in the village. Across Route 58 lies a white sandy beach, while the market sells fresh produce and local specialties such as handwoven baskets and shikuwasa honey. We stopped for coffee and sat in the back on old classroom chairs, listening to the waterfall and watching butterflies drift through the trees.

Continuing north, Michi no Eki Yuiyui Kunigami is one of the last major roadside stations before Cape Hedo and Okinawa's sparsely populated northern coastline. The station focuses on regional products and frequently hosts community events that highlight daily life in the island's rural communities. It is also one of the most family-friendly stops along the route, with playgrounds, indoor activity areas, and bike and mini-car rentals for children. Several restaurants and shops line the complex, and a large shaded seating area



provides a comfortable place to enjoy a meal or rest before continuing north. Many vendors here operate on a cash-only basis.

Most roadside stations operate their shops during daytime hours, though parking and restrooms remain open around the clock. Some stalls accept credit cards while others are yen only, so it's best to come prepared with cash. Arriving earlier in the day increases the chances of finding the widest selection of fresh produce and prepared foods.

Taken together, these roadside stations reveal something essential about Okinawa. They are places where a simple stop for coffee or a snack can turn into a conversation, a discovery or an unplanned pause to watch the ocean. Along Route 58, the drive north is not just about reaching the destination. It is about everything that happens along the way.



FAMILY

Kadena Air Base 2025 FCC Provider of the Year: Christine Olson



Christine Olson has called Okinawa home since December 2023. She is married to Conor, a member of the Air Force, and a mother to two energetic and kind-hearted daughters. Since their arrival, the island has served as a vibrant backdrop for her family's latest adventure and her own evolving career in child development.

Her professional journey has always been defined by a deep-seated commitment to children and families. With a **Bachelor's degree in Psychology** and a **Master's degree in Child Life**, she brings a high level of clinical and educational expertise to her work. Her diverse resume includes roles as a:

- Teacher's Aide and English Instructor
- Registered Behavior Technician
- Early Intervention Specialist
- Certified Infant Massage Instructor (Loving Touch International)

FAMILY CHILD CARE

634-0514

The transition into motherhood and the unique demands of life as a military spouse sparked a desire for a more flexible, family-centered career path. This led Christine to establish herself as an **FCC Provider in April 2025**. Today, she provides a vital support system for the local community, consistently caring for approximately six families per week.

Christine's services go beyond standard childcare, offering **Drop-in Care, MSAC, PCS Care and ECC**. To further support military parents, she hosts "Parents' Night Out" twice monthly and organizes specialized "Family Engagement Activities" for holidays and special occasions.

At the heart of her practice is a personal philosophy rooted in **transparency and open communication**. She believes these values are the essential building blocks for nurturing strong relationships and earning the lasting trust of both the children in her care and their parents.



TEEN CENTER
634-8443 | Bldg 439

OPERATION MEGAPHONE and Spring Fling LOCK-IN

Friday, April 17 | 7 p.m. - midnight

Enjoy a night of food, fun and friends while connecting with other Operation Megaphone participants.

During the Month of the Military Child, military teen programs from across the services and around the world come together to offer Operation Megaphone.

Operation Megaphone, also known as OMP, is an annual teen engagement event designed to connect military teens, discuss key issues that affect them, promote communication across all military services and provide opportunities for teens to give back to their communities.

Sign up in CYPBMS.



Membership Appreciation Party

Friday, April 10 | 4 p.m.

Join us for free food and fun as we announce our Teen of the Month.

YOUTH CENTER

Spring Break!

FIELD TRIPS

Register via CYPBMS portal.

Murasaki Mura: Okinawan Art & Culture
 March 31 | 9 a.m. - 1 p.m.
 Paint your own Shisa and explore a traditional Okinawan village!

DIY Tote Bag Painting
 April 1 | 9 - 11 a.m.
 Design and paint your own custom canvas masterpiece.

Rock Climbing: Reach New Heights
 April 2 | 9 a.m. - 1 p.m.
 Master the wall and learn climbing safety with our pro team.

Price includes all three trips.
 \$60 | recreation member
 \$70 | non-recreation member

YOUTH CENTER

BIRTHDAY PARTIES

Celebrate your birthday at the Youth Center! Select from various packages including painting, pottery, video games, dance and more!



YOUTH CENTER

634-0500 | Bldg 1849

Instructional Classes

Open Now for Enrollment!
 All classes are once a week to total 4 per month unless otherwise specified.

Computer and Language with Koeigo

STEAM | ages 6 - 15
 Animation | ages 9 - 14
 3D Design | ages 11 - 14
 Japanese | ages 6 and over
 Digital Art | ages 6 - 15
 Programming | ages 6 - 15
 \$60 per month

Karate

White Belt
 \$45 per month | ages 5-18
Intermediate
 \$60 per month | ages 5-18
Advanced
 \$60 per month | ages 5-18

Pottery

Pottery 1
 \$65 per month | ages 5 - 8
 2 classes per week, 8 classes per month
Pottery 2
 \$70 per month | ages 9 and over
 2 classes per week, 8 classes per month

Gymnastics

Daddy, Mommy and Me Gymnastics
 \$45 per month | ages 18 mos - 2 yrs
Pre-K Gymnastics
 \$45 per month | ages 18 mos - 2 yrs
Gymnastics 1
 \$55 per month | ages 5 - 8
Gymnastics 2/3
 \$55 per month | placement required
Beginner Tumbling
 \$55 Per Month | ages 5 and over
Intermediate Tumbling
 \$55 Per Month | placement required
 Teams, placement, price and time varies.

Dance

Introduction to Hip-Hop
 \$30 per month | ages 7 and over
 2 classes per month
Pre-Ballet
 \$45 per month | ages 3 - 4
Introduction to Ballet
 \$45 per month | ages 5 - 7
Ballet 1
 \$55 per month | ages 7 - 9
Jazz Theatre 1
 \$45 per month | ages 6 - 8
Lyrical Modern
 \$45 per month | ages 6 - 8

CHEER

Tiny Cheer
 \$55 Per Month | ages 5 - 7
Mini Cheer
 \$55 Per Month | ages 7 - 9
Far East Elite Cheerleading Storm X
 \$165 Per Month
Far East Elite Cheerleading Riptide
 \$165 Per Month

Music

Piano
 \$65 Per Month | ages 4 and over
Violin
 \$65 Per Month | ages 5 and over
Guitar
 \$65 Per Month | ages 5 and over
Sanshin
 \$65 Per Month | ages 9 and over

COMING SOON

Summertime Golf Lesson
 Registrations start in May

Membership Appreciation Day

Friday, April 17 | 3:30 p.m.
 Join us for an exclusive fun day at the Youth Center!
Members only.

YOUTH SPORTS & FITNESS

BE THE GAME-CHANGER

Discover your true calling as a volunteer coach at Kadena Youth Sports and Fitness!

Sign up using the QR code or contact Youth Sports today!

YOUTH SPORTS & FITNESS
 634-9126 | Bldg. 108



MILITARY & FAMILY READINESS CENTER

634-3366 | Bldg 220

Pre-Separation Brief

Wednesday, Apr. 1 and 15 | 8 - 11:30 a.m.
Education Center, Bldg. 59, Room 115
Step 2 of the congressionally mandated Transition Assistance Program (TAP) for service members preparing for separation or retirement from the military.

NEO Warden Training

Wednesday, Apr. 1 | 9 - 10 a.m.
This training is for newly assigned NEO Wardens to learn the basic roles and responsibilities assigned to them as NEO Wardens.

Japanese Calligraphy

Wednesday, Apr. 1 | 10 - 11:30 a.m.
Learn how to write Kanji with an ink brush! This class is designed specifically for adults; all supplies are provided.

EFMP Kid's Activity: "I AM" Shields

Wednesday, Apr. 1 | 2:30 - 4 p.m.
Join us for a children's affirmation workshop designed to help kids - especially military-connected children - recognize their inner strengths, celebrate resiliency and create visual "shields" decorated with affirmations, colors and symbols that represent their personal power.

Language Exchange

ランゲージエクスチェンジ!!
Friday, Apr. 3, 10, 17 and 24 | 11:30 a.m. - 12:30 p.m.
A language exchange group for both Japanese and English speakers. Learn about language and culture from native speakers and practice your conversation skills.

First Duty Station Officer Personal Finance Seminar (FDS - O)

Monday, Apr. 6 | 9 - 11 a.m.
Kadena M&FRC, Large Classroom
Mandatory training for First Duty Station Officers: Must be completed within the first 90 days of arrival to Kadena AB.

TAP Workshop

April 7 - 9 | 8 a.m. - 4:30 p.m.
Education Center, Bldg. 59, Room 115
Step 3 of the congressionally mandated Transition Assistance Program (TAP) for service members preparing for separation or retirement from the military.

Post-Deployment Brief

Tuesday, Apr. 7 and 21 | 9 - 10 a.m.
Open to all members deploying for 30 days or more. Family members are encouraged to attend.

Pre-Deployment Brief

Wednesday, Apr. 8 and 22 | 9 - 10 a.m.
Open to all members deploying for 30 days or more. Family members are encouraged to attend.

Japanese Survival Language Class

Wednesday, Apr. 8 | 10 - 11 a.m.
A crash course to teach you basic Japanese words and phrases to survive in Japan.

Kadena Sponsorship Training

Tuesday, Apr. 14 | 9:30 - 11 p.m.
Education Center, Bldg. 59, Room 116
This workshop is designed to support, direct, and train Unit Monitors, First-time sponsors, and those who have not been a sponsor within the past year. Topics will include Kadena specific guidance from the M&FRC, Personal Property & Passenger Travel Management Office, Finance, Housing Office, Lodging, the Veterinary Clinic and other agencies.

Navigating Federal Employment Workshop

Tuesday, Apr. 14 | 9 - 11 a.m.
Education Center, Bldg. 59, Room 115
This class provides a deep dive into understanding federal employment including resume tips, the application process and best practices for conducting a job search.

Japanese Conversation Class

Wednesday, Apr. 15 | 10 - 11 a.m.
If you're interested in learning Japanese speaking, writing and grammar, our Japanese language classes are for you! Class will cover grammar, vocabulary and Hiragana.

Commander's Key Support: Annual Updates/Continued Education

Wednesday, Apr. 15 | 1 - 3 p.m.
Education Center Bldg. 59, Room 116
The Continuing Education series is intended for Active Commander's Key Support Program Liaisons and Mentors to discuss and learn various topics helpful in serving as a volunteer.

EFMP: Easter Bunny Meet and Greet with Egg Hunt

Wednesday, Apr. 15 | 1 - 3:30 p.m.
Join us for a fun-filled event that everyone in the family will enjoy. This is a magical Easter celebration with hands-on craft workshop, photos with the Easter Bunny and a themed egg hunt designed for all ages.

Smooth Move

Friday, Apr. 17 | 9:30 a.m. - 12:30 p.m.
Schilling Community Center, Bldg. 455
This workshop is designed to assist with a smooth transition to your next base. You'll get a handy checklist of moving tasks and useful information from base agencies including Legal, Housing, TMO and more. Meets the financial touchpoint for PCS training requirements.

Boots to Business (B2B) Entrepreneurship Track

Apr. 20 - 21 | 8 a.m. - 4:30 p.m.
Education Center, Bldg. 59, Room 115
Part of the congressionally mandated Transition Assistance Program (TAP) for service members preparing for separation or retirement from the military. Open to transitioning service members and their spouses.

Department of Labor Employment Track

Apr. 22 - 23 | 8 a.m. - 4:30 p.m.
Education Center, Bldg. 59, Room 115
Part of the congressionally mandated Transition Assistance Program (TAP) for service members preparing for separation or retirement from the military. Open to transitioning service members who have completed the TAP Workshop and their spouses.

NEO Warden Training

Wednesday, Apr. 29 | 9 - 10 a.m.
This training is for newly assigned NEO Wardens to learn the basic roles and responsibilities assigned to them as NEO Wardens.

EFMP: Budgets in Bloom: Bunny Bank Craft

Wednesday, Apr. 29 | 1 - 3 p.m.
Join us for a spring-themed financial literacy workshop to learn smart savings habits while creating your very own bunny-shaped piggy bank!

All classes are free and open to all DoD ID Cardholders unless otherwise specified.

Classes are held at Kadena M&FRC, Building 220, unless noted otherwise.



VIEW AND REGISTER FOR CLASSES HERE!



CHECK OUT OUR OKINAWA JOB BOARD HERE!



Japanese Conversation Class

Wednesday, Apr. 15 | 10 - 11 a.m.

The Japanese Conversation Classes are designed to get you more comfortable conversing in real-world scenarios. Each week will focus on a different topic to help you better navigate life in Okinawa.

EFMP 101

Wednesday, Apr. 22 | 11 a.m. - noon

An overview of the Exceptional Family Member Program and the local resources available to support service members and their family. Learn how each EFMP component supports your family. Ideal for newly Q-Coded members and anyone interested in knowing more about EFMP.



EDUCATION & EMPLOYMENT



Celebrate the Month of the Military Child:

Come Be a Part of Something BIGGER!

This April, honor military children by joining the team that supports them every day.



KADENA EDUCATION & TRAINING

Bldg. 59, 3rd floor | Education & Training
634-1500 | kadenaeducationoffice@us.af.mil
Mon - Thu | 8 a.m. - 3 p.m., Fri | 8 a.m. - noon

DoD SkillBridge Briefing

Friday, April 17 | 2 - 3 p.m.
Kadena Education & Training Office, Bldg. 59, 3rd floor, Room 332
Register in AFVEC → Ed Center info banner on right → Ed Center Events
The DoD SkillBridge program offers an opportunity to gain valuable civilian work experience through industry-specific training, apprenticeships or internships.

Face-to-Face TA Brief for First-Time TA Users

Wednesday, April 8 and 22 | 2 - 3 p.m.
Kadena Education & Training Office, Bldg. 59, 3rd floor
Register in AFVEC → Ed Center info banner on right → Ed Center Events

On-Base Schools

UMGC | Kadena Education & Training Office, Bldg. 59, 2nd floor | 634-2206 | kadena-asia@umgc.edu
ERAU | Kadena Education & Training Office, Bldg. 59, 2nd floor | 634-5083 | kadena.campus@erau.edu

Upcoming PME Courses

April 6 - May 8 | SOS: 26-D
April 20 - May 8 | CLC: 26-D
April 30 - June 5 | SNCOA: 26-E
Have you recently completed your EJPME (previously SEJPME)? Send a copy of your certificate to kadena.pmemanagementoffice@us.af.mil to update your records.

Testing

Preparing for the 2026 E5/E6 promotion testing:
1. Check eligibility in DVR.
2. Contact unit WAPS monitors with questions.
3. Check emails for updates from AFPC/Pearson VUE.
4. Study at Air Force study guides.
5. See the Education & Training SharePoint.
To sign up for the AFOQT, TBAS, EDPT, DLPT or DLAB, email kadena.educationservicestesting@us.af.mil.

We will be closed all day Thursday, April 16, for FSD training.

Featured: Child Development Centers
One of many opportunities with 18 FSS.

Enjoy meaningful work, professional training, supportive leadership and the chance to make a lasting difference in the lives of military families.



We're hiring for:

Child Development Centers

Ages 6 weeks - 5 years
Shape young minds in a safe, nurturing environment.

School Age Care

Ages 5 - 12 at Kadena Elementary
Help children grow, learn and thrive after school.

Family Child Care

Be your own boss while providing care in a loving home setting.

Apply today

www.usajobs.gov

Your career, their future.

NAF HUMAN RESOURCES

634-2330 | Bldg. 721
Email: 18fss.naf.hro@us.af.mil

18 FSS and 718 FSS are Equal Employment Opportunity (EEO) employers.



Scan here for the full FSS directory



Kadena FSS Dining

Online ordering and delivery available at www.kadenafss.com
OR download the **OKI GRUBS** App



Air Power Cafe

Mon - Fri | 5:30 a.m - 1:30 p.m.

Café Latte

966-7416 | 036-868-2205

Tue - Sat 6:30 a.m. - 2 p.m.
Sun and Mon Closed

Chili's Grill & Bar

966-7359 | 010-1512-672-7359

Daily 11 a.m. - 10 p.m.
Holidays Regular hours

Chili's Delivery/To-Go

Delivery | 966-7366 | 036-868-2210

Daily 11 a.m. - 10 p.m.

To-Go | 966-7360 | 036-868-2209

Food Truck & Catering | 966-7359 | 010-1512-672-7359

Chippers at Chibana Golf Course

966-7367 | 036-868-2368

Mon - Fri 7 a.m. - 7 p.m.*

Sat and Sun 6 a.m. - 7 p.m.*

*last order at 6 p.m.

Dining Facilities

Marshall

Mon - Fri	Breakfast	5:30 - 8 a.m.
	Lunch	10:30 a.m. - 1 p.m.
	Dinner	4 - 7:30 p.m.
	Midnight Meal	10 p.m. - 12:30 a.m.
Weekends, Holidays and down days	Brunch	6:30 a.m. - 1 p.m.
	Dinner	4 - 7 p.m.
	Midnight Meal	10 p.m. - 12:30 a.m.

Dough Pizzeria

966-7426 | 036-868-2212

Daily 11 a.m. - 10 p.m.

Delivery | 966-7375 | 036-868-2274

Daily 11 a.m. - 9:30 p.m.

It's Just Wings

966-7250 | 036-868-2258

Mon - Sun 11 a.m. - 10 p.m.

Seaside

966-7401 | 036-868-2213

Mon and Tue Closed

Wed - Fri 10:30 a.m. - 9 p.m.

Sat - Sun 9 a.m. - 9 p.m.*

*Weekend Brunch ends at 2 p.m.

Holidays Regular Hours**

**Except Thanksgiving, Christmas and New Year's Day

Surfside Grill & Bar at Okuma Beach

631-1805 | 098-962-1805

Open regular hours on holidays

Breakfast 8 a.m. - 10 a.m.

Lunch 11 a.m. - 3 p.m.

Dinner 3 - 9 p.m.
(last order 8:30 p.m.)

Tee House Restaurant

966-7429 | 036-868-2214

Daily 6 a.m. - 3 p.m.

The Rocker Club

Kazoku Place | 966-7380 | 036-868-2227

Mon - Thu Breakfast/Lunch 6 a.m. - 2 p.m.

Dinner 4 - 9 p.m.

Fri Breakfast/Lunch 6 a.m. - 2 p.m.

Dinner 4 - 9:30 p.m.

Sat Breakfast/Lunch 7 a.m. - 2 p.m.

Dinner 4 - 9:30 p.m.

Sun Closed

Holidays Breakfast/Lunch 6 a.m. - 2 p.m.

Dinner 4 - 9 p.m.

Hanabi's Restaurant & Bar

Sun - Thu 11 a.m. - 10 p.m.

Fri and Sat 11 a.m. - 2 a.m.

The Daily Grind

Mon - Fri 6 a.m. - 9 p.m.

Weekends and Holidays 7 a.m. - 9 p.m.



2026 1/24 SAT - 5/11 MON SAT SUN MON P.H.

DoubleTree by Hilton Okinawa Chatan Resort (2F) Restaurant "MaTiira"

43Mihama Chatan-cho Nakagami-gun Okinawa 904-0115, Japan
TEL 098-901-4600 FAX 098-901-4601

TIME 12:00~14:30 PRICE Adult ¥4,900/Child ¥1,800[6-12]
*L.O. 13:45 * Price includes tax and service charge

Paid Ad. No federal endorsement of advertiser intended.



2026 AMERICA FEST



K A D E N A A I R B A S E

APRIL 11/12

Saturday | 11 a.m. - 8 p.m.

Sunday | noon - 6 p.m.

KADENA FLIGHT LINE

*250 years of America:
Stars, Cars and Guitars*



EMBRY-RIDDLE
Aeronautical University



Scan for Event Details



No federal endorsement of sponsors intended.